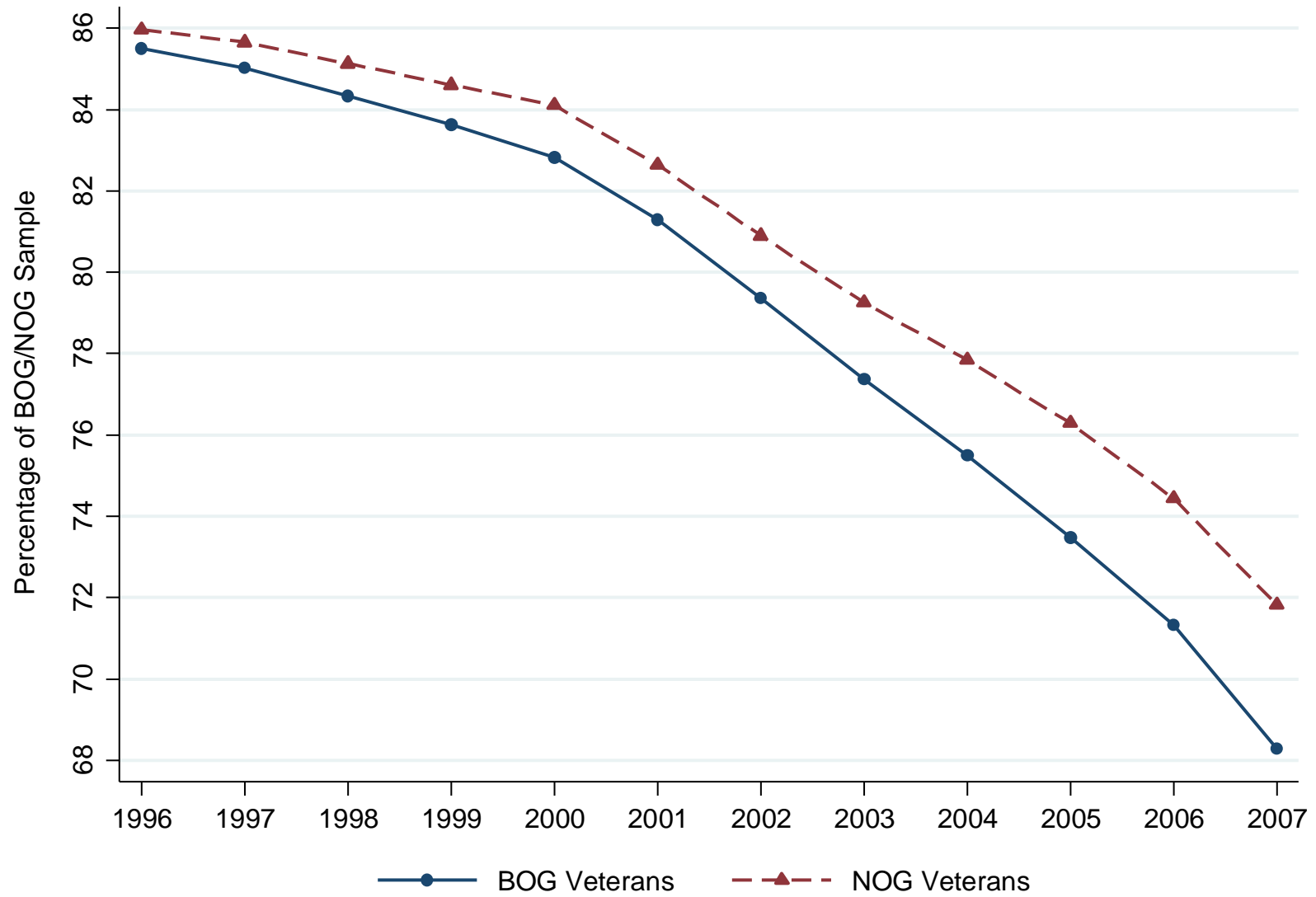


The Impact of Disability Benefits on Labor Supply: Evidence from the VA's Disability Compensation Program

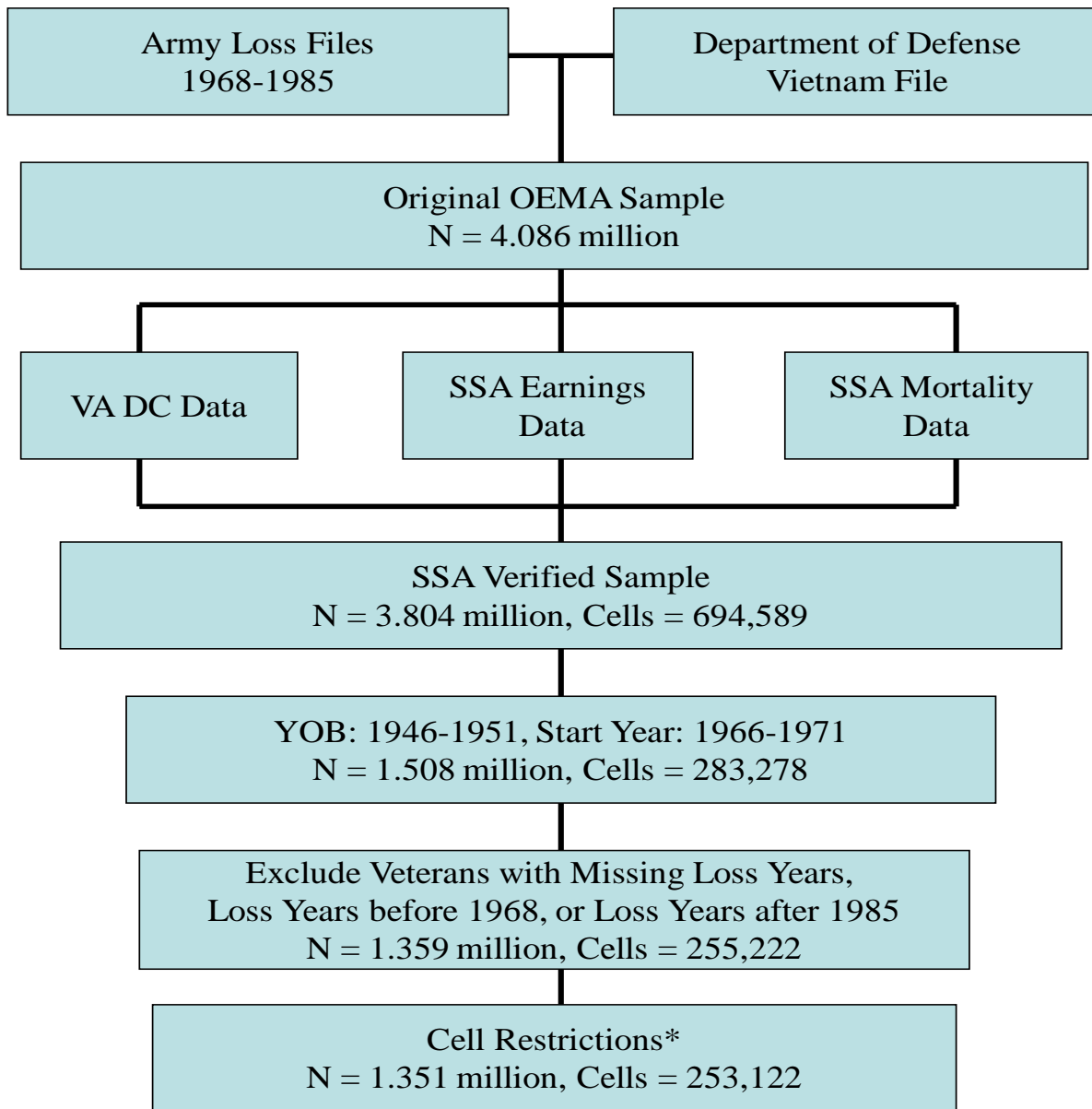
By David H. Autor, Mark Duggan, Kyle Greenberg, and David S. Lyle

Online References

Online Reference Figure 1. Percentage of BOG and NOG Veterans with Positive Annual Earnings



Online Reference Figure 2. Data Diagram



Notes: Cell restrictions limit the sample to cells where all veterans have the same birth year (466 observations dropped), all veterans have start years between 1966 and 1971 (2,677 observations dropped), all veterans have loss years between 1968 and 1985 (4,681 observations dropped), and no veterans have a missing loss year (80 observations dropped).

Online Reference Table 1. Distribution of Year of Birth and Start Year in OEMA Sample

A. Year of Birth Distribution					B. Start Year Distribution				
Birth Year	NOG Veterans		BOG Veterans		Start Year	NOG Veterans		BOG Veterans	
	Observations	Percent of NOG Sample	Observations	Percent of BOG Sample		Observations	Percent of NOG Sample	Observations	Percent of BOG Sample
≤1935	45,287	1.75	123,079	8.26	≤1955	36,885	1.42	106,389	7.14
1936	2,665	0.10	13,933	0.93	1956	1,776	0.07	12,132	0.81
1937	2,840	0.11	13,250	0.89	1957	1,779	0.07	12,107	0.81
1938	3,548	0.14	14,212	0.95	1958	2,485	0.10	15,181	1.02
1939	4,813	0.19	15,024	1.01	1959	2,254	0.09	14,769	0.99
1940	7,522	0.29	17,947	1.20	1960	2,339	0.09	14,192	0.95
1941	10,865	0.42	23,911	1.60	1961	4,018	0.15	16,002	1.07
1942	18,988	0.73	34,477	2.31	1962	4,359	0.17	15,689	1.05
1943	29,298	1.13	47,114	3.16	1963	4,778	0.18	15,895	1.07
1944	38,786	1.49	60,134	4.03	1964	6,362	0.25	18,357	1.23
1945	48,100	1.85	80,247	5.38	1965	9,675	0.37	26,859	1.80
1946	72,463	2.79	131,973	8.86	1966	38,014	1.46	88,681	5.95
1947	108,739	4.19	227,042	15.23	1967	96,939	3.74	174,641	11.72
1948	165,733	6.39	227,941	15.29	1968	196,281	7.56	263,378	17.67
1949	155,513	5.99	191,467	12.85	1969	199,973	7.71	263,700	17.69
1950	143,759	5.54	134,445	9.02	1970	163,525	6.30	149,738	10.05
1951	141,803	5.46	72,982	4.90	1971	191,736	7.39	60,564	4.06
1952	165,508	6.38	37,175	2.49	1972	215,043	8.29	15,087	1.01
1953	141,310	5.45	15,720	1.05	1973	144,792	5.58	3,053	0.20
1954	157,134	6.05	5,849	0.39	1974	187,413	7.22	1,753	0.12
1955	162,502	6.26	919	0.06	1975	162,643	6.27	1,802	0.12
≥1956	968,018	37.30	1,518	0.10	≥1976	920,849	35.48	3,624	0.24
					Missing	1,276	0.05	196,766	13.20
Total	2,595,194	100.00	1,490,359	100.00	Total	2,595,194	100.00	1,490,359	100.00

Notes: Panel A reports the distribution of birth years in the original OEMA sample for the BOG and NOG subsamples. Panel B reports the distribution of start years. A start year is the year a veteran entered the Army.

Online Reference Table 2. Distribution of Loss Year in OEMA Sample

Loss Year	A. NOG Veterans		B. BOG Veterans	
	Observations	Percent of NOG Sample	Observations	Percent of BOG Sample
1960	-	0.00	1	0.00
1961	-	0.00	2	0.00
1962	-	0.00	2	0.00
1963	-	0.00	2	0.00
1964	-	0.00	8	0.00
1965	-	0.00	25	0.00
1966	-	0.00	140	0.01
1967	-	0.00	250	0.02
1968	17,787	0.69	7,128	0.48
1969	83,222	3.21	165,959	11.14
1970	265,968	10.25	258,909	17.37
1971	241,772	9.32	273,725	18.37
1972	122,400	4.72	219,993	14.76
1973	164,026	6.32	77,013	5.17
1974	175,414	6.76	51,296	3.44
1975	162,983	6.28	32,696	2.19
1976	160,387	6.18	26,037	1.75
1977	146,516	5.65	23,410	1.57
1978	129,296	4.98	21,334	1.43
1979	141,220	5.44	19,612	1.32
1980	137,754	5.31	15,946	1.07
1981	119,916	4.62	12,921	0.87
1982	128,458	4.95	12,153	0.82
1983	141,806	5.46	11,393	0.76
1984	131,090	5.05	11,597	0.78
1985	125,179	4.82	10,857	0.73
1986	-	0.00	6,052	0.41
1987	-	0.00	5,089	0.34
1988	-	0.00	5,684	0.38
1989	-	0.00	5,212	0.35
1990	-	0.00	4,392	0.29
1991	-	0.00	3,501	0.23
1992	-	0.00	3,671	0.25
1993	-	0.00	2,563	0.17
Missing	-	0.00	201,786	13.54
Total	2,595,194	100.00	1,490,359	100.00

Notes: This table reports the distribution of loss years within the NOG and BOG groups of the original OEMA sample. A loss year is the year a veteran exited the Army.

Online Reference Table 3. SSA Verification Rate by Start Year

Start Year	A. NOG Veterans		B. BOG Veterans	
	Obs	SSA Match Rate	Obs	SSA Match Rate
≤1944	6,970	86.5	8,209	95.8
1945	1,321	85.3	2,808	96.4
1946	2,057	88.2	3,943	97.2
1947	2,027	87.3	3,754	96.4
1948	3,752	87.8	5,988	96.3
1949	3,846	88.6	4,794	95.8
1950	5,400	82.2	8,286	95.0
1951	4,275	82.4	13,569	95.3
1952	1,925	82.8	13,125	98.0
1953	1,983	81.5	15,593	98.6
1954	1,522	82.4	13,370	98.9
1955	1,807	84.3	12,950	99.0
1956	1,776	84.8	12,132	98.8
1957	1,779	88.1	12,107	99.0
1958	2,485	88.4	15,181	98.9
1959	2,254	91.0	14,769	98.9
1960	2,339	93.5	14,192	99.0
1961	4,018	93.6	16,002	98.8
1962	4,359	91.4	15,689	98.5
1963	4,778	91.4	15,895	98.4
1964	6,362	91.5	18,357	98.5
1965	9,675	91.6	26,859	98.2
1966	38,014	94.4	88,681	98.8
1967	96,939	93.3	174,641	97.2
1968	196,281	92.3	263,378	95.5
1969	199,973	87.0	263,700	93.1
1970	163,525	87.1	149,738	98.8
1971	191,736	86.6	60,564	99.4
1972	215,043	86.2	15,087	99.5
1973	144,792	85.6	3,053	98.8
1974	187,413	85.8	1,753	99.1
1975	162,643	88.2	1,802	98.6
≥1976	920,849	96.3	3,624	99.1
Missing	1,276	81.7	196,766	99.4
Total	2,595,194	90.9	1,490,359	97.0

Notes: This table reports SSA verification rates for veterans by start year and BOG or NOG status.

Online Reference Table 4. Distribution of Year of Death in the BOG and NOG samples from 1996-2007

Year of Death	A. Full Sample				B. SSA Verified Sample			
	BOG		NOG		BOG		NOG	
	Annual (1)	Cumulative (2)	Annual (3)	Cumulative (4)	Annual (1)	Cumulative (2)	Annual (3)	Cumulative (4)
1996	0.0041	0.0041	0.0038	0.0038	0.0036	0.0036	0.0032	0.0032
1997	0.0041	0.0082	0.0039	0.0077	0.0037	0.0073	0.0035	0.0068
1998	0.0041	0.0123	0.0037	0.0114	0.0038	0.0111	0.0035	0.0102
1999	0.0045	0.0168	0.0041	0.0155	0.0042	0.0153	0.0038	0.0141
2000	0.0050	0.0218	0.0045	0.0200	0.0047	0.0200	0.0042	0.0183
2001	0.0058	0.0276	0.0053	0.0253	0.0054	0.0254	0.0051	0.0234
2002	0.0062	0.0339	0.0062	0.0315	0.0058	0.0313	0.0060	0.0293
2003	0.0070	0.0409	0.0064	0.0379	0.0066	0.0379	0.0061	0.0355
2004	0.0073	0.0481	0.0068	0.0447	0.0068	0.0447	0.0067	0.0421
2005	0.0080	0.0562	0.0075	0.0522	0.0076	0.0523	0.0073	0.0494
2006	0.0086	0.0647	0.0079	0.0601	0.0083	0.0606	0.0077	0.0570
2007	0.0093	0.0740	0.0084	0.0685	0.0093	0.0699	0.0083	0.0653
Not Deceased	0.9260	1.0000	0.9315	1.0000	0.9301	1.0000	0.9347	1.0000

Notes: This table reports the distribution of death years for BOG and NOG veterans conditional on being alive as of 1996. Veterans who were alive as of 2007 are recorded as "Not Deceased." The statistics reported in Panel A are from a sample based on all restrictions described in the data appendix, but includes veterans who did not verify with the SSA and veterans who died after 1995. Panel B further restricts the sample to veterans who verified with the SSA. Annual mortality rates indicate the percentage of veterans who died in the year indicated. Cumulative mortality rates indicate the percentage of veterans deceased as of the year indicated.

Online Reference Table 5. Mortality in the BOG versus NOG samples from 1996-2007

DV: 100 x 1[Died in year t]

	A. Full Sample		B. SSA Verified Sample	
	(1)	(2)	(1)	(2)
BOG		0.031*** (0.008)		0.035*** (0.008)
BOG * (YR-1996)		0.001 (0.003)		-0.004 (0.002)
BOG * (YR-2001) * (YR≥2002)		0.007 (0.005)		0.014*** (0.005)
BOG * (YR96)	0.032*** (0.011)		0.039*** (0.010)	
BOG * (YR97)	0.022** (0.011)		0.015 (0.011)	
BOG * (YR98)	0.033*** (0.011)		0.030*** (0.011)	
BOG * (YR99)	0.040*** (0.011)		0.032*** (0.011)	
BOG * (YR00)	0.059*** (0.012)		0.053*** (0.012)	
BOG * (YR01)	0.052*** (0.013)		0.037*** (0.013)	
BOG * (YR02)	0.005 (0.014)		-0.012 (0.014)	
BOG * (YR03)	0.068*** (0.014)		0.050*** (0.015)	
BOG * (YR04)	0.045*** (0.015)		0.020 (0.015)	
BOG * (YR05)	0.063*** (0.016)		0.041** (0.016)	
BOG * (YR06)	0.075*** (0.016)		0.067*** (0.017)	
BOG * (YR07)	0.105*** (0.017)		0.113*** (0.018)	
Outcome Mean (1996)	0.395		0.346	
Outcome Mean (2007)	0.946		0.943	
# OBS (Indiv)x(Year)	16,198,016		15,281,960	

Notes: This table reports estimates of equations (1) and (2) where the dependent variable equals 100 the year a veteran dies and 0 otherwise. Both panels report estimates from a sample that drops veterans in years after their year of death. Thus, each veteran is recorded as deceased at most one time. Panel A includes veterans who did not verify with the SSA, but makes all other sample restrictions described in the data appendix (except mortality restrictions). Panel B only includes veterans who verified with the SSA. (YR-1996), (YR-1998), and (YR-2001) are linear time trends. All regressions use individual-level data and include year fixed effects and fixed effects for each combination of (AFQT-quintile)x(year), (year of birth)x(year), and (race)x(year). Standard errors, clustered on individuals, are reported in parentheses.

*** Significant at the 1 percent level.

** Significant at the 5 percent level.

* Significant at the 10 percent level.