

# AGGREGATE AND DISTRIBUTIONAL IMPACTS OF HOUSING POLICY: CHINA'S EXPERIMENT

KAIJI CHEN, QING WANG, TONG XU, AND TAO ZHA

---

*Date:* November 8, 2019.

*Key words and phrases.* Housing policy, household heterogeneity, consumption, down payment ratio, crowding out.

*JEL classification:* E21, G18, E02, E50, G11, G12.

The research is supported in part by the National Science Foundation Grant SES 1558486 through the NBER and by the National Natural Science Foundation of China Project Numbers 71473168, 71473169, and 71633003. For helpful discussions, we thank Markus Brunnermier, Gueorgui Kambourov, B. Ravikumar, Nobuhiro Kiyotaki, Dirk Krueger, Fabrizio Perri, Richard Rogerson, Stijn van Nieuwerburgh, Chris Sims, Gian Luca Violante, Shang-Jin Wei, Wei Xiong, Bo Zhao, Eric Zwick, and participants of New York Fed, Peking University, 2019 NBER Chinese Economy Conference, and 2019 SWUFE International Conference in Macroeconomics. The views expressed herein are those of the authors and do not necessarily reflect those of the Federal Reserve Bank of Atlanta, the Federal Reserve System, or the National Bureau of Economic Research.

ABSTRACT. What's the role of credit conditions in housing booms and busts and what are the distributional consequences of housing booms and busts across households of different characteristics? In this paper, we take China's recent changes in housing policy as an experiment to address these two key issues. During 2014Q4-2016Q3, China relaxed its housing policies by reducing the minimum down payment ratio of non-primary houses from 60-70 percent to 30 percent. By exploiting two unique micro-level data sets, we find that this policy change induced a significant increase in mortgage credit demand among middle-aged high-educated households, while crowding out mortgage credit to young households. Moreover, consumption growth by middle-aged high-educated households slowed down following this policy change. To quantify the aggregate and distributional impacts of this policy change, we construct an overlapping-generation economy with household heterogeneity and calibrate it to match various aggregate and cross-sectional moments of China. Our policy experiment suggests that a cut in the minimum down payment ratio for non-primary houses involves a self-enforcing effect on housing demand via equilibrium housing price: a reduction in the down payment ratio for non-primary housing triggers an initial housing price increase. This, in turn, generates capital gains for existing homeowners when the policy changes and allows them to switch to a larger or better house by overcoming the credit constraint for housing investment. Such a process is self-enforcing via the equilibrium housing prices due to the interaction between stronger housing demand and higher housing price.

It has been widely acknowledged that booms and busts of a country's housing markets lie at the heart of its macroeconomy. Yet, two important questions surrounding housing booms and busts remain open. First, what's the role of credit conditions in housing booms and busts? Second, what are the distributional consequences of housing booms and busts across households of different characteristics?

In this paper, we take China's recent changes in housing policy as an experiment to address these two key issues. To resolve overstock of housing markets following its monetary stimulus during 2009-2010, in 2014Q4, China began to relax its housing policies. This relaxation lasted until 2016Q3. The thrust of this relaxation of policy is a reduction in the minimum down payment ratio of non-primary houses from 60-70% to 30%.<sup>1</sup> Accordingly, it experienced a housing market boom during this period: the average annualized growth rate of housing prices for the 35 major cities in China reached 7.30%, in contrast to a 2.32% growth rate during 2011Q1-2014Q3; the average annual newly issued mortgage amount for the same group of cities is 30% higher than its counterpart during 2011Q1-2014Q3. The outstanding mortgage debt nationwide increased from 10.6 trillion RMB in December 2014 to 17.9 trillion RMB in December 2016. On the other hand, the aggregate consumption growth rate has started to decline (Figure 1).<sup>2</sup>

Hence, China's recent policy experiment serves as an ideal identification of changes in credit conditions, and allows us to address their roles in housing booms from both empirical and theoretical perspectives. Our main finding is that a relaxation in credit conditions via loan-to-value ratio (LTV) policies on non-primary houses plays a crucial role in fueling the recent housing boom in China and involves significant distributional effects on both mortgage and consumption.

---

<sup>1</sup>The key idea for this policy reform is to remove the hurdles for middle- and high-income households to enter the housing markets to digest the overstock of housing, and at the same time, by developing the housing rental markets, lease out their non-primary houses to the low-income households. This can be seen from the mandate from the 2015 Central Economic Work Conference to "It is necessary to develop the housing rental market, encourage natural persons and various institutional investors to purchase inventories of commodity housing, become a provider of housing in the rental market,..to eliminate outdated restrictive measures". See the link <http://finance.people.com.cn/GB/8215/392239/401049/index.html>.

<sup>2</sup>According to Financial Times on Feb. 1st, 2019, the recent slowdown in consumption growth, e.g. car sales, has much to do with the so-called "consumption downgrading" by the middle-class Chinese households, who are heavily mortgage-debt burdened and thus wealthy hand-to-mouth. See the link <http://www.ftchinese.com/story/001081321?full=y&cocode=2G178003&archive>.

Specifically, on the empirical part, we exploit two unique micro-level data sets. Our first data set is a proprietary loan-level mortgage data set covering all new mortgages by one of the largest bank in China to its 70 major cities during 2011-2018. The second data set is China Household Finance Survey, containing four waves conducted every other year from 2011 on. This data set contains household-level information on both consumption, income and various categories of assets and liability. We use these two data sets to explore the changes in the mortgage shares and consumption growth across households of different ages and education levels following the policy changes, and establish the linkage between these two.

Our major empirical findings are as follows: First, during 2014Q4-2016Q3, a period of relaxation of LTV policy, the share of new mortgage in terms of both loan amount and number of origination for the middle-aged, high-educated households increased significantly, which squeezed out new mortgage for young households. Interestingly, although the relaxation of LTV policy was mostly on the non-primary house, the increase of mortgage by the middle-aged high-educated households came mostly from the mortgage for their primary residence. Second, the slowdown in aggregate consumption growth is mainly driven by consumption growth of the middle-aged high-educated households, who experienced significant increase in mortgage and housing sizes. Finally, controlling for various household characteristics, our regression suggests that households with higher mortgage debt burden tend to have lower consumption growth.

Disciplined by these empirical findings, we construct a dynamic OLG equilibrium model with household heterogeneity. The main goal of our theory is to (1) quantify the effects of a relaxation of LTV policy changes on housing prices, mortgage and non-housing consumption at both aggregate and household levels; (2) analyze experiments of counterfactual policy changes. Three key features consistent with China's institutional background are incorporated into the model: First, primary and non-primary (or so-called secondary) houses are subject to different minimum down payment ratios.<sup>3</sup> As a result, a reduction in the down payment ratio for secondary houses affects households' credit conditions on their primary house only through its indirect effects via equilibrium housing prices. Second, households' utility on housing services contains two stochastic regimes, which capture belief about future housing demand as the likelihood of switching from one regime to the other. Under a strong

---

<sup>3</sup>Throughout this paper, we call non-primary houses as secondary houses, although in the data they include a household's second and third (or above) houses.

belief about future housing demand, the middle-aged homeowners, which comprise a non-trivial fractions of housing demand, tends to be credit constrained for investment purposes. Third, rental markets are frictional, which prevent households with secondary houses to rent them out to those without houses. This creates potential misallocation of resources when households with second houses leave them vacant.

We calibrate the stochastic steady state of our model to match various aggregate and cross-sectional moments before the relaxation of LTV policy in 2014Q4. Our calibrated model can replicate well age profile of households' mortgage demand, asset portfolios, and leverage, as well as cross-sectional moments on wealth inequality before the policy relaxation. We then use this model to experiment with a temporary cut of the minimum down payment ratio of the second house to mimic China's LTV policy relaxation during 2014Q4-2016Q3. Our simulated results can explain about half of the increase in housing prices and over 90% of the increase in mortgage loans at the aggregate levels. In addition, as a support for our model mechanism, changes in the cross-sectional moments from our model can match the data on changes in mortgage loan and consumption across different ages and education levels fairly well.

The main mechanism of our model is that a cut in the minimum down payment ratio for non-owner-occupied houses involves a self-reinforcing effect on housing demand via equilibrium housing prices. With belief of strong future housing demand, a reduction in the down payment ratio for secondary houses triggers an initial increase in housing prices by encouraging investment in secondary houses. This, in turn, generates capital gains for existing homeowners when the policy change and allows them to switch to a house of larger size or better quality even if the LTV constraint for the primary house remains the same. Such a process is self-enforcing via the equilibrium housing prices due to the interaction between stronger housing demand and higher housing price.

In terms of consumption, our model predicts that a relaxation of LTV policy reduces non-housing consumption for middle-aged high-education households, who benefited from capital gain due to higher housing prices. This result is in sharp contrast to the theoretical predictions in existing housing literature, in which a positive wealth effects of housing price increases homeowners' non-housing consumption. In our model, the middle-aged high-educated households, despite a capital gain from their housing held before the policy change, choose to switch to a large house for investment purpose in expectation of future capital gain. As a consequence, their non-housing consumption fall for two reasons: first, they substitute

current consumption for future consumption via investment in housing; second, a higher mortgage debt burden forces them to reduce their non-housing consumption.

The rest of the paper is organized as follows. Section I provides a literature review. Section II provides the institutional backgrounds regarding China's housing markets and housing policies. Section III describes the two micro-level data sets used in this paper. Section IV discusses the empirical results regarding the changes in mortgage and consumption growth during the period of LTV policy relaxation. In Section V, a dynamic overlapping-generations equilibrium model with household heterogeneity is established and calibrated. Section VI quantifies the impacts of relaxation of LTV policy and other counterfactual policies. Section VII concludes the paper.

## I. RELATED LITERATURE

This paper contributes to an extensive literature on housing booms and busts from both empirical and theoretical perspectives. On the theoretical part, a fast growing literature uses quantitative housing model to explore the role of credit conditions in housing boom and bust.<sup>4</sup> For example, Landvoigt, Piazzesi and Schneider (2015) show that housing prices increased more in lower end of housing markets, which contains a higher fraction of constrained households. Favilukis, Ludvigson and Van Nieuwerburgh (2017) build a general equilibrium model to show that a relaxation of collateral requirements is the main cause of the U.S. housing boom before 2007 via stimulating housing consumption by credit constrained households. By contrast, Kiyotaki, Michaelides and Nikolov (2011) and Kaplan, Mitman and Violante (2017) argue that a relaxation of credit conditions has limited effects on housing demand or housing prices. The key reason is that the potential beneficiaries of the credit relaxation (tenants and constrained owners) in the latter two papers represent a small share of the total housing market. Our theory sheds light on a novel channel for changes in credit conditions to affect housing demand and housing prices. Such a channel relies on two key model features absent from the above studies: (1) middle-aged wealthy households, which represent a non-trivial fraction of the total housing demand, are constrained for housing investment (rather than housing consumption); (2) changes in credit conditions affect existing homeowners' housing values via equilibrium housing prices. As a result, the capital gain associated with

---

<sup>4</sup>Apart from changes in credit conditions, the literature has exploited the quantitative housing models with household heterogeneity to understand the role of various other policies on housing prices and consumption, including monetary policy (e.g. Wong (2016) and Beraja et al. (2018)), tax policies (e.g. Sommer and Sullivan (2018)) and changes in payment-to-income requirements (e.g. Corbae and Quintin (2015)).

higher housing prices allows the existing homeowners to overcome the credit constraint and churn up their housing size. In a model with both rental markets and long-term mortgage, we show that this channel can generate quantitatively sizable aggregate impacts of changes in credit conditions on housing prices and housing demand. Also, different from the above papers, a relaxation in credit conditions in our model crowds out the mortgage shares of the young households, arguably the most credit constrained households for housing purchase.

Our paper also contributes to the quantitative studies on the redistributive effects of housing policy and housing booms and busts. The literature has emphasized the redistributive effects of housing (asset) prices on consumption via its income effects. For example, Kiyotaki, Michaelides and Nikolov (2011) argue that net house buyers (such as young worker-tenants) lose and net house sellers (such as retiree-homeowners) gain from the house price spike. Along a similar spirit, Glover, Heathcote, Krueger and Ríos-Rull (2011) show that in the downturn, the young households may benefit from an asset value slump by buying these assets at low prices. While in our model, similar income effects of housing price spikes apply to tenants and young constrained homeowners, the main culprits for changes in housing policy to slow down aggregate consumption are those households with large illiquid assets and heavy debt burden (wealthy hand-to-mouth). Despite a positive wealth effect of housing capital gain, these households choose to reduce their consumption when investing houses for intertemporal substitution of consumption unto future. Another novel feature of our model is that, with rental markets frictions, a relaxation of credit constraints exacerbates misallocation of housing resources between home owners and renters.

On the empirical front, our paper contributes to the extensive literature on the primary drivers of housing booms using micro-level data. The literature takes two drastically different views: credit supply view and the expectation view. According to the former, increase in credit supply unrelated to fundamental improvements in income or productivity was the driver that initiated mortgage boom.<sup>5</sup> According to the latter, inflated housing price expectations led banks to increase the supply of mortgage credit and encouraged borrowers to increase housing demand. By providing new evidence on the reallocation of mortgage debt during housing booms, our evidence suggests the crucial role played by the interaction of both credit supply and expected future housing demand in fueling the housing boom. During China's recent housing boom, changes in credit supply clearly originated from the

---

<sup>5</sup>Studies along the line of this view, as in the seminal work of Mian and Sufi (2009, 2011), argue that changes in credit supply affected mostly the subprime borrowers, arguably low-income households.

policy changes, rather than rising anticipated housing appreciation. However, different from the credit supply view, we find that changes in credit conditions increased mostly mortgage and housing demand by high-income homeowners (middle-aged with high education), who are likely constrained for housing investment under belief of strong future housing demand. Such empirical findings are in line with those in some recent empirical works that are used to support for the expectation view.<sup>6</sup> However, both our evidence and theory suggest that such an reallocation of mortgage credit does not necessarily stem from *changes in* housing price expectations, as the expectation view argues, but from changes in credit conditions.

Apart from the role of credit conditions in housing booms, our evidence also contributes to the recent empirical literature on the effects of housing booms on consumption. The literature so far emphasized the positive wealth effects of housing booms and busts.<sup>7</sup> While our evidence suggests the existence of the wealth effects for some groups of households (e.g. the old high-educated households), it sheds light on an opposite effect of housing booms on household consumption, that is, intertemporal substitution of consumption by households with large illiquid assets and heavy debt burden. Such a channel is potentially important for housing prices to affect aggregate consumption, as consumption by those households represent a non-trivial fraction of aggregate consumption. Moreover, due to the illiquidity of housing, the effects of such a channel may persist even if the housing booms are over.

Finally, our paper contributes to the emerging literature on China's high housing price puzzles. Of particular relevance are the following two studies.<sup>8</sup> Fang, Gu, Xiong and Zhou (2016), using an independent mortgage loan data set that ranges from 2003-2013, find enormous housing price appreciations during the decade and document carefully the financing burden of mortgage borrowers across different income groups and cities. Chen and Wen (2017) develop a general equilibrium model to attribute the faster-than-income growth housing prices during the golden decade to the role of housing as store of values. Both papers

---

<sup>6</sup>For example, Foote, Loewenstein and Willen (2016) find a uniform increase in mortgage debt across income levels during the boom. Similarly, Albanesi, De Giorgi and Nosal (2017) show that credit growth between 2001-2007 is concentrated in the middle and at the top of credit scores. Adelino, Schoar and Severino (2018) find that during the housing boom, mortgage credit was extended to a broad based household of all income/credit scores level.

<sup>7</sup>See, for example, Mian, Rao and Sufi (2013), Berger, Guerrieri, Lorenzoni and Vavra (2017), and Guren, McKay, Nakamura and Steinsson (2018).

<sup>8</sup>Other papers in this literature include, among others, Wei, Zhang and Liu (2017), Chen, Liu, Xiong and Zhou (2017), Gu, He and Qian (2018), which are mostly empirical, and Zhao (2015) and Han, Han and Zhu (2018), with a theoretical focus.



focus on the secular growth of housing prices before the recent housing boom starting from 2014. By contrast, our paper focuses on the role of changes in credit conditions or housing policies during housing booms. And both papers use either micro data or equilibrium theory. Our paper exploits both micro data and dynamic equilibrium theory. Accordingly, it fits into the emerging literature that aims to understand the interaction between macroeconomy and microeconomic heterogeneity. Our cross-sectional evidence provides an empirical discipline of our quantitative theory, which is crucial to assess the impacts of policy changes. Our theory, in turn, highlights the transmission of housing policy into housing demand and consumption via equilibrium housing prices and is used to study counterfactual policy experiments, both of which can hardly be addressed by a mere empirical exercise.

## II. CHINA'S HOUSING MARKET AND POLICY

This section discusses the unique features of China's housing markets, financial markets, and housing policies, all of which are pertinent to the subsequent empirical and theoretical analysis in this paper.

**II.1. Financial underdevelopment and housing as store of values.** In China, interest rates are controlled by the central banks. The deposit rate has been subject to a ceiling to subsidize the financing of SOE.<sup>9</sup> Through a system of strict capital controls, where the state directly manages the banking sector and financial intermediation, the government has been able to maintain or suppress interest rates at below market-clearing levels. Accordingly, the mortgage interest rates offered by individual commercial banks follow closely the benchmark lending rate stipulated by the PBoC.

In addition, the availability of financial assets as vehicles of household savings is quite limited in China: stock markets are poorly regulated and dominated by SOE, the national capital account is closed, and the exchange rate is fixed or tightly managed. Under this circumstance, housing has naturally become the most important store of value for most Chinese households, which has led to high concentration of wealth in housing among Chinese households. For example, according to our computation with CHFS data, in 2013, housing comprised of 75.5% of households' wealth in urban China, as compared to about 40% for

---

<sup>9</sup>The ceiling was formally removed in October 2015. However, to prevent competition on the deposit, a market interest rate self-regulation mechanism was established in 2013, which effectively forces commercial banks' deposit rate to peg the benchmark deposit rates.

the U.S. households.<sup>10</sup> The share of financial assets in Chinese households' wealth is only 8.63%, compared with a value of 37.9% in the U.S.

Land available for home construction in China is strictly controlled by the government. According to a law passed by State Council of China in 2008, the amount of cultivated land in 2010 and 2020 has been maintained at 1.818 billion acres and 1.805 billion acres, respectively, the so-called red-line lower limit for the total amount of arable land, implying a de facto upper bound for the supply of land for home and real estate construction. In addition, the local governments in China have incentives to limit the supply of land to boost the land price, since the revenues from selling land are important sources of revenues of local governments since 1994.

The use of housing as store of values, together with the limited supply of land, has created speculative investment demand for housing. Around 15% of urban Chinese households owned a second house in 2013. As a result, the house-price-to-income ratio is much higher than the developed economies. According to Fang, Gu, Xiong and Zhou (2016), the price-to-income ratio for the bottom-income group has been sustainably above 8 for all three tier cities. For the middle-income group, this ratio has reached to a level of above 6 in 2012. By contrast, the price-to-income ratio for the U.S. was around 3 before during and after the housing bubble that peaked in 2006.

Moreover, the vacancy rate of owner-occupied housing in urban China has been persistently high in recent years. According to our computation with the data from CHFS, among 35 major cities in China, the average housing vacancy rates have been stably around 20% during 2011-2017. The housing vacancy rate for non-primary houses is even higher, reaching 42.06% in 2017. Chen and Wen (2017) show that underlying the faster housing-price-to-income growth and the high vacancy rates in urban China was the speculative demand for housing.

**II.2. Rental market frictions.** Rental markets in China are under-developed due to various institutional frictions. On the demand side, housing ownership has clear advantages over renting along several dimensions: First, with the scarcity of high-quality education resources in China, it gives the children of a homeowner priority to have access to the schooling where the purchased housing is located. Second, due to the incomplete laws on house lease, tenants cannot safeguard their lawful rights and interests. According to a 2017 survey by Beijing

---

<sup>10</sup>Within the category of financial wealth, bank deposit takes a share of 65.21%.

government for 5000 youth about housing status, about one third of them experienced expelling by landlords, 41.3% experienced rent increasing that violated the leasing contract and 43.8% experienced un-creditworthy behavior of rental agencies. By contrast, in Germany, there are a series of laws protecting the lawful rights of tenants.<sup>11</sup> Third, owning a house has increasingly become a prerequisite for male to marry a female under the unbalanced sex ratios in China. According to Wei, Zhang and Liu (2017), the unbalanced sex ratios can well explain the high level of housing prices.

On the supply side, China does not have credit score systems for individual households such as FICO, Equifax in the U.S. As a result, it is hard for the landlord to identify potentially good tenants and effectively protect themselves against defaults on rental payments. More importantly, due to the fast growth of housing prices, the rent to price ratio has long remained low. The average rent to price ratio for residential housing in first tier cities was around 2.4% in 2013. This is in contrast to a 3% benchmark deposit rate and a 6% benchmark lending rate during the same period. The low rent-to-price ratios discourage both homeowners to lease additional housing and the real estate developers to borrow from banks for developing rental housing.

The rental market frictions contribute to high home ownership rates among Chinese households, especially among those below age 30. In 2013, the home ownership rate in China was 86%, compared with 65% in the U.S. Also, China has the highest home ownership rate among young households, reaching 67% in 2013, compared with only about 35% for the U.S. and 31% for UK.

**II.3. Mortgage market and housing policy.** China's mortgage market was developed along the process of housing privatization since 1998. In 1998, the share of outstanding mortgage in GDP was merely about 0.5%, reaching to about 16.5% in 2014. However, during the recent mortgage boom, this ratio increased rapidly, to 26.6% in 2017. The share of mortgage debt in households disposable income grew even faster, from 38.4% in 2014 to 60.5% in 2017. Among various kinds of liability, mortgage loans takes the largest share in consumer loans of Chinese households, especially medium and long-term (MLT) loans. For example, in 2013, the share of residential mortgage loans in total (MLT) consumer loans was 69.4% and 87.4%.

---

<sup>11</sup>For example, the Amendment Acts on Leasing Rights passed in 2013 requests that the increase of rent cannot exceed 15% in three years.

In China, all mortgage loan is for home purchase. Mortgage cannot be used to extract existing home equity. There does not exist home equity line of credit, second mortgage that allows households to refinance. Moreover, the reverse mortgage market did not exist until 2014, when Chinese government started a two-year pilot program to introduce reverse mortgage by some life insurance company.<sup>12</sup> Moreover, there are no secondary market for mortgage loan via securitization, e.g. mortgage-backed security. As a result, the maximum LTV ratio that individual banks offer follows closely the LTV policy, which we discuss now.

In China, the minimum down payment ratio for primary houses and second houses are different and have often be used by the government to affect housing demand. For example, in 2008, as part of the stimulus package, the minimum down payment ratio for the primary (second houses) dropped from 30% (40%) to 20%. In January 2010, however, to suppress the speculative housing demand, the minimum down payment ratio for the second (first house with area more than 90 square meters) houses increased to 50% (30%). In January 2011, the minimum down payment ratio for the second house was further increased to 60% and no mortgage loan for the third houses and above.

To boost the housing markets, China began to relax its LTV policies in 2014Q4. This relaxation lasted until 2016Q3. The thrust of this relaxation of policy is a reduction in the minimum down payment ratio of non-primary houses from 60-70% to 30%. During this period, the only drop of the down payment requirement for the primary houses happened on August 27, 2015, from 30% to 25%. Since 2016Q4, however, LTV policies have been tightened again. In 2016Q4, twenties cities, most first and second tier, tightened their LTV policy by increasing the minimum down payment ratio for the second (first) houses, to 40% to 70% (30%). By June 2017, 44 cities and counties across China tightened their LTV policy, especially for the second house.

Apart from the above mortgage policies, the monthly maximum mortgage payment should be less than 50% of total households' income. The longest mortgage term in China is 30 years. The age of mortgage borrowers should be between 18-65 years of age.<sup>13</sup>

---

<sup>12</sup>However, the pilot program proved to be unpopular in China. Up to the end of July 2017, only 65 households participated in the program nationwide. See Fang and Feng (2018).

<sup>13</sup>In addition to LTV policies, Chinese government also imposed various restrictions on housing transaction to directly affect the demand or supply of housings. For example, to discourage housing demand, between 2010Q1 and 2014Q1, 46 cities, most of which are first tier or second tier cities, followed the purchase restriction policy. This policy was abandoned in March 2014 for most cities in China, except for the four first-tier cities and Sanya.

### III. DATA

**III.1. Data Description.** We use two unique micro-level data sets in our empirical analysis. The first is a proprietary loan-level data for mortgage origination from one of the largest banks in China. The outstanding mortgage loans held by this bank account for around 14% of total outstanding mortgage loans in China, and this share stays roughly constant across years. Our data contains all new mortgage loans advanced by this bank for purchasing new, residential properties during 2011Q1 - 2018Q2. It contains more than 3.3 million mortgage loans, covering the 70 major cities that correspond to the city sample in National Bureau Statistics (NBS) 70-city housing price index. The data records detailed transaction-level information in the following three categories: (i) home buyers' characteristics, including age, gender, occupation, education, (reported) income, number of houses, city, and zip code; (ii) loans' characteristics, including down payment, mortgage loan, maturity, mortgage interest rate, credit score; and (iii) house price and size. Importantly, our data contains information on whether a particular mortgage is for the mortgage borrower's primary or secondary houses. Moreover, it contains information about each homebuyers' characteristics, including age, gender, occupation, education, (reported) income, number of houses, city, zip code and credit score.

Our second data set is China Household Finance Survey, conducted by Southwest University of Finance and Economics every two years since 2011. This data is the most comprehensive source of household-level data in China on wealth, consumption and income. Relative to traditional household spending data sets in the United States and United Kingdom, such as Consumer Expenditure Survey (CEX), Survey of Consumer Finance (SCF) or Living Costs and Food Survey, (LCFS), the clear advantage of this data set is that it contains disaggregate information on *both* (i) wealth and household balance sheet; (ii) a rich array of expenditure at the household levels. This allows us to establish the empirical linkage from household mortgage debt or debt to income ratio to consumption growth, a key for this paper. The survey is large consisting of over 8,000 households in each waves. For example, the 2013 survey sample includes 19,203 urban households. Within each wave, a subset of households were repeatedly interviewed, which allows us to compute the consumption growth rate at the household level.

Each interview records information on the following set of questionnaires: (i) demographic characteristics (age of the household head, education, household size, etc.) and labor market (income); (ii) asset and liabilities, including various categories of both non-financial assets,

such as real estates, and financial assets; (iii) expenditures on detailed categories over the past year and non-labor income; (iv) social and commercial insurance. The variables of interest for our purpose are age, education, consumption expenditure, income, mortgage debt, as well as housing tenure status (renter or homeowners).

**III.2. Summary Statistics and Main Variables.** Table 1 presents the descriptive statistics for the main variables in our mortgage data sample. For each variable, we report its average and standard deviation for the two sub-periods (2011Q1-2014Q3 2014Q4-2016Q3), as well as the full sample period, which covers the period 2016Q4-2018Q2 . Our full sample consists of 3,011,765 borrowers for primary houses and 259,024 for secondary houses.

We first compare individual borrowers characteristics for the primary and secondary houses by comparing respective variables between panel A and B during 2011Q1-2014Q3, the period before LTV policy was relaxed. In terms of the importance of mortgage for primary houses, its share in mortgage origination numbers during this period is 94.8%. Borrowers for primary houses are on average four year younger than those for the secondary houses. Also, the fraction of borrowers owning a college degree or above is smaller for primary houses than for secondary houses (47% vs 62%). This suggests that borrowers for secondary houses tend to be richer than those for the primary houses, as can also be seen from a larger average house size and a larger housing value for secondary houses than for primary houses. On the other hand, the average mortgage balance at origination for the primary houses is similar in size as that for the secondary houses (425,970RMB versus 426,030RMB). This is in contrast to a 37% higher monthly mortgage payment for secondary houses than for primary houses (3938RMB vs 3302RMB), suggesting a shorter maturity for mortgage of secondary houses than for primary houses. Another salient difference is that the LTV ratio at origination for the primary houses is higher than that for the secondary houses (63% vs 38%), reflecting the difference in LTV policies on these two types of houses. The average mortgage interest rate for primary houses was about 1% lower than that for secondary houses (6.55% vs 7.40%), again reflecting the difference in mortgage interest rate policy towards primary and secondary houses. The purchase mortgage debt to income ratio for primary houses is 4.00 for the primary houses, but only 2.54 for secondary houses, which again suggests that borrowers for secondary houses on average have on average higher income than those for primary houses.

We now compare the borrowers characteristics between the two sub-periods for primary and secondary houses, respectively. As panel A shows, for primary houses, the fraction of borrowers with college degree or above increased from 47% to 59%, while the mean age for

borrowers for primary house also increased from 34.50 to 34.68. This suggests mortgage credit was reallocated toward middle-aged households with college degree or above. The average housing size also increased for primary houses, implying existing home owners churned up housing size during the boom. The average initial mortgage loan increased by about 27% (from 425,970RMB to 542,760RMB), whereas the average LTV ratio barely changed between these two periods, suggesting a similar percentage increase in purchased housing values for borrowers of primary houses. The increase in mortgage loan also implies higher mortgage debt burden, as evidenced by an 13% increase in (from 3302RMB to 3738RMB) monthly mortgage payment and an increase in average mortgage debt to income ratio from 4.0 to 4.2. This is despite an decrease in average mortgage interest rates from 6.55% to 5.14%.

For the secondary houses, we observe a similar pattern regarding the increase of fraction of borrowers with college degree or above, from 62% to 72% and increase in mean age of mortgage borrowers from 38.6 to 39.7. More importantly, initial mortgage loan per borrower is 82% higher in the sub-period 2014Q4-2016Q3 than previous period (776,220RMB vs 426,020RMB). This is partially because the LTV ratio increased from 0.38 to 0.59 and partially because average housing values increased by 19.3%. Accordingly, the mortgage debt burden for the secondary houses also increased substantially. This can be seen by an 39% increase in the monthly mortgage payment, or an increase in mortgage debt to income ratio from 2.53 to 3.42. Average mortgage interest rates for secondary houses dropped by more than 2%, from 7.40% to 5.20%. Finally, the share of mortgage for secondary houses increased from 5.2% to about 11% (8%) in terms of loan amount (loan numbers).

Table 2 reports the summary statistics for the CHFS data. For comparison, we include all three surveys from 2013 on, since the 2011 survey contain much fewer samples. First, the average household consumption fell between the 2015 survey and 2017 survey (55,390RMB vs 54,280RMB), despite an increase in average household income. The outstanding mortgage, on the other hand, increased significantly from 2013 to 2015 and from 2015 to 2017. The share of housing assets in total assets increased from 75.46% in 2013 to 76.06% in 2015, and fell to 72.71% in 2017. The average home ownership rate increased from 86% in 2013 to 89.25% in 2015, followed by a slight fall to 88.1% in 2017.

#### IV. EMPIRICAL FINDINGS

This section begins with a descriptive analysis on how new mortgage loan and consumption growth changed during the period of relaxing LTV policy at both aggregate and disaggregate

levels. After that, we establish the empirical linkage between mortgage debt and consumption growth at the household level.

**IV.1. Mortgage.** Figure 2 shows the age profile of average LTV ratio at origination across years. We pick three years, 2011, 2013 and 2015 to highlight the changes of age profiles that may potentially be attributable to the LTV policy relaxation. The first two years are before the policy changes and the third is during the period of LTV policy relaxation. The left and right panels plot the age profile of LTV ratios at mortgage origination for primary and secondary houses, respectively. As shown in the left panel, the LTV ratio for the primary house for all three years peak at age 30. More importantly, the LTV ratios across three years are close to one another, which is consistent with the fact that the relaxation of LTV policy during the boom was mostly on the secondary house.<sup>14</sup> The age profile of LTV ratio for secondary houses differs significantly from its counterpart for the primary house in several aspects: first, their levels are smaller in magnitude than their counterparts for primary houses in all three years, and are close in magnitude to the maximum value stipulated by policies at different years. Another notable difference is that the age profile of LTV ratio jumped up from a level below 40% in 2013 to a level above 55% in 2015. Since the maximum down payment ratio for the second house dropped from from 60-70% to 40% in March 2015 (and further to 30% in February 2016). This suggests that the relaxation of LTV policy allowed households who purchase secondary houses to increase their leverage substantially.

To show the the extent to which households' LTV constraints are binding over time, we also report in Figure 3 the distribution of LTV ratios over time, again for primary and secondary houses separately. For illustration purposes, we plot the LTV ratios for four different group of households in the LTV ratio distribution, the 90th percentile, the 75th percentile, the 50th percentile and the 25th percentile. As the left panel shows, for the primary house, except for households in the bottom 25th percentile, the LTV ratios for all other households are either close to or at its maximum according to the LTV policy (70%). This is especially the case before the LTV policy relaxation. A similar pattern holds for the LTV ratios of the secondary houses, with most households' LTV ratios close to or at its maximum of (40%) before the policy relaxation. Moreover, following the relaxation of LTV policy for the secondary houses in 2014Q4, all groups of households' LTV ratio jumped up substantially, close to or at its

---

<sup>14</sup>Recent empirical studies on the U.S. housing booms and busts find very small changes of LTV ratios at origination over the boom and bust cycle across the whole distribution. See, for example, Adelino, Schoar and Severino (2018).



new maximum. This suggests that a relaxation of LTV constraints for second houses allows households investing in secondary houses to borrow more against their housing values.

Figure 4 displays the dynamics of aggregate mortgage loans and the financing burdens of households. As the top two panels show, the dynamics of mortgage for the primary and all houses, in terms of both loan amount and origination numbers, track each other very closely before the relaxation of LTV policy. The two series started to diverge when the LTV policy was relaxed in 2014Q4, suggesting an increasing share of mortgage for secondary house under the direct effect of LTV policy relaxation on secondary houses. Nevertheless, the sharp increase in aggregate mortgage during the boom period is mainly attributable to the mortgage of the primary house. Given the marginal change of the minimum down payment ratio for the primary house during this period, this suggests that the relaxation of LTV policy for the secondary house has a spillover effect on the mortgage demand for primary houses.

The bottom left panel plots the dynamics of the ratios of mortgage debt at origination to income (DTI). Before the housing boom, the mortgage debt to income ratio was below 4. However, during the mortgage boom, this ratio increases steadily to about 4.5 in 2016Q3. By comparison, during the U.S. housing boom in 2001-2006, even households in the lowest income quintile had a mortgage DTI ratio below 3.50, as shown in Adelino, Schoar and Severino (2016). The bottom right panel plots the house value to income ratio over time. Before the housing boom, the value to income ratio was slightly above 6 on average. During the boom, this ratio increased again steadily to a level of 6.75 in 2016Q3. Both the steadily increase of the DTI and value to income ratios suggest that homeowners have been subject to heavier financing burden since the housing boom.

We now turn to the distribution of mortgage across ages. To this end, we plot the age profiles of mortgage share for 2011, 2013 and 2015, in terms of both loan amount and the number of mortgage origination. As the top panels of Figure 5 shows, mortgage shares in both loan amount and origination numbers are hump-shaped. The age profiles for 2011 and 2013 are very similar, with households aged 25-30 obtaining the highest share of more than 20%. When it comes to 2015, the profile shifted to the right: the mortgage share of households aged 30-40 increased significantly, whereas that for households aged 20-25 declined. Such a change holds for both the mortgage loan amount and origination numbers.

To highlight the role of extensive margins in household indebtedness, we plot the age profile of the ratios of outstanding mortgage debt to income and the share of mortgage

holders among all households. The left panel shows that the age profiles between 2011 and 2013 are fairly similar, hump shaped and peaking at age 30. The age of peak is consistent with that in the top two panels regarding the mortgage share. Between 2013 and 2015, however, the DTI ratio for households aged 30-49 increased significantly. Such an increase can be due to an increase in the share of households who newly became the mortgage borrowers (extensive margin) and a higher DTI ratio for those households who were already mortgage borrowers before the housing boom (intensive margin). As the bottom right panel shows, the age profile of the share of mortgage borrowers has a similar pattern as that for the DTI ratio, suggesting the importance of extensive margin in the age profile of DTI ratio. More importantly, the increase of the share of mortgage borrowers came mostly from households aged 30-50, which suggests the crucial role played by the increasing share of households with positive mortgage in the increase of DTI ratio during the housing boom.

To display numerical values, we classify all households into three age groups. Those aged below 30 as young households, while those aged between 30 and 49 as middle-aged and those aged 50 and above as old households. This classification is consistent with the age profile of mortgage share before the LTV policy relaxation, which peaks in age 30. We also classify all households into two education groups: those with college and above degree and those with high school and below, which, for concision, we call high-education and low-education groups, respectively,

Table 3 reports the mortgage share across age-education groups in 2013. As Panel A shows, in 2013 the mortgage loan amount are more or less equally distributed across middle-aged and young households, especially those with high education. The shares of mortgage loan amount are close to one another for households of middle-aged high-education, middle-aged low-education, and young high-education, all of which are above 25%. Panel B exhibits a similar pattern for mortgage of primary houses, suggesting that the distribution of mortgage amount across age-education groups are mainly driven by the mortgage amount of the primary house. In terms of origination numbers, panel C and D shows that the middle-aged low-educated households take the largest share above 33%, followed by young and middle-aged high-educated households.

The relaxation of LTV policy redistributed the mortgage share across age-education groups. As panel A and C of Table 4 shows, the only age-education group that increased mortgage share is the middle-aged high-educated households. Their mortgage shares have increased by

13.45% and 8.12% in terms of loan amount and origination numbers, respectively. By contrast, the mortgage shares of most other age-education groups (except old highly-educated households), especially those for the middle-aged low-educated and young high-educated, have declined. Panel B and D suggest that such a reallocation of mortgage credit is mainly driven by the reallocation of mortgage credit of primary houses, although their maximum LTV ratio barely changed.

What drives the increase in mortgage share of middle-aged high-educated households, especially for their primary houses? Figure 6 plots the age profile of the average value of newly purchased housing with mortgage in 2011, 2013 and 2015. To control for the increase of housing prices, we scale the average housing value of each household in our mortgage data by the constant-quality housing price index of the city where the household resided at the time mortgage origination occurred. Corresponding, for a given age, the gap of housing value across years reflects changes of housing value due to increase in average house size or housing quality for the average household of that age.

The left panel shows that for low-educated households, during 2011-2013, the increase of average housing value is symmetric across households of different ages. Moreover, during 2013-2015 the increase of the average housing value for middle-aged households (aged 30-50) is similar in magnitude to its counterpart during 2011-2013. As the right panel shows, between 2011-2013, the increase of average housing size is symmetric across households of different ages and similar in magnitude to that of low educated households. However, this is not the case for the housing boom. During 2013-2015, the average housing value for households of age 30-50 increased by about 20%, which is significantly higher than those of high-educated young households and those age 60 and above. This asymmetric pattern of the increase in the average housing value suggests that middle-aged high-educated households traded up their home value by taking more mortgage during the housing boom, while this is not the case for other age-education groups, including those young high-educated households.

**IV.2. Consumption growth.** We now switched to the impacts of relaxation of policy on consumption growth. Table 5 reports the consumption growth rate for the two episodes: 2013-2015 and 2015–2017. The first episode captures the period before the relaxation of LTV policy and the second during the relaxation of LTV policy.<sup>15</sup> For each panel in this table, we also report the income growth during the two episodes to control its effects on

---

<sup>15</sup>In CHFS, the questionnaire for consumption expenditure is the expenditure during the previous year of each survey.

changes of consumption growth during these two episodes. Panel A shows that consistent with Figure 1, consumption growth during the second episode is slower than its counterpart in the period before LTV policy relaxation. This is despite a faster income growth during this period.

The main factor attributable to the slowdown in aggregate consumption growth during the housing boom is the slower consumption growth of the middle-aged households. Panel B shows that, despite a faster income growth, middle-age households experienced a decline in annualized consumption growth of 2% during the second episode, whereas consumption growth of the other two age groups either increased or hardly changed. Panel C reports the change of consumption or income growth between the two episodes by age and education. The left panel shows that the middle-aged high-educated households experienced a significant consumption growth slowdown by 3.59% per year, in contrast to an insignificant change in consumption growth of the middle-aged low-educated households. The right panel suggests that consumption growth slowdown of households of middle ages and high education is not due to the slowdown of income growth, as their income growth actually speed up during 2015-2017.

To examine whether the observed decline in consumption growth, especially for the middle-age high educated households, are related to households' housing investment and mortgage debt burden, we further compute the consumption growth for two subgroup of households in our CHFS sample, homeowners and renters. If housing investment and mortgage debt burden are key to understand the slowdown in consumption growth, we should observe a slowdown in consumption growth for homeowners, but not renters. Table 6 and 7 report the consumption growth rate for the two episodes: 2013-2015 and 2015-2017 for homeowners and renters, respectively. According to Panel A of these two tables, the slowdown in average consumption growth between 2013-2015 and 2015-2017 still for homeowners, but not for renters: during these two episodes, for homeowners, average consumption growth fell by 1.19%, but for renters it increased by 3.12%. Panel B exhibit a similar pattern for the middle-age households. For homeowners, average consumption growth fell by 2.54%, while for renters, it increased by 4.10%. Panel C shows that for homeowners, consumption growth of middle-aged high-educated households fell by 3.68%, while for renters, there is no significant decline of the consumption growth of the same age-education group. Therefore,

In summary, during the mortgage boom, middle-aged, high-educated households experienced a significant increase in mortgage share but a decline in consumption growth. The

increase of mortgage share by this household group squeezed out mortgage of other age-education groups. This is especially the case for young high-educated households, who have a strong demand for housing, but are likely to be credit constrained. And the observed slowdown in average consumption growth is entirely driven by the slowdown in consumption growth of the middle-aged homeowners, especially those of high-educated, not renters. This is despite the fact that middle-aged homeowners experienced faster income growth during this period.

We now establish the empirical linkage between consumption growth and mortgage debt burden. We examine the effect of mortgage debt burden along both the extensive and intensive margins on households' consumption growth. Along the extensive margin, we regress consumption growth on a dummy equal to 1 if a household has mortgage debt and 0 otherwise. Along the intensive margin, for a sub-sample of households who have positive mortgage debt, we regress consumption growth on the outstanding mortgage debt to income ratio. Intuitively, households with mortgage debt or a higher debt to income ratio are more burdened by mortgage payment and thus have less cash on hand. Our main control variable is contemporary income growth.<sup>16</sup>

Table 8 reports the regression outcomes. Column (1) suggests that households with mortgage debt on average have consumption growth lower than households without mortgage debt by 5.31%. Column (2) further shows that a higher mortgage debt to income ratio reduces consumption growth. If the household's outstanding mortgage debt increases by 1% relative to its income, the consumption growth will decrease by 0.55%. In both regressions, the estimated coefficients are highly significant.<sup>17</sup> Therefore, our regression suggests that the increase in mortgage share of the middle-age high-educated households during the period of LTV policy relaxation might contribute to their consumption growth slowdown by making them more heavily mortgage-debt burdened.

Our empirical findings are puzzling from the perspective of the existing lifecycle models: (1) Why did middle-aged high-educated households, instead of young households, increase mortgage the most in response to the relaxation of LTV policies? (2) Why did the relaxation

---

<sup>16</sup>Each regression includes age, age-squared, education dummy and growth of household sizes as control variables.

<sup>17</sup>The estimated coefficient for mortgage dummy is significant at 1%, whereas the estimated coefficient for mortgage debt to income ratio is significant at 5%. The less significance of the intensive margin might be due to the fact that income in the survey data might contain higher measurement error, which tends to bias down the estimated coefficients.

of LTV policies on secondary houses fueled the mortgage of the middle-aged high-educated households on their primary houses? (3) Why did consumption growth of the middle-aged high-educated households fall while their mortgage loan and housing demand increased?

## V. MODEL

We now develop a dynamic equilibrium model to reconcile with the empirical facts in the previous section. To investigate the aggregate and distributional effects of housing policies, we include the following key model ingredients: (1) Primary and secondary houses are subject to different minimum down payment ratios. (2) Households' utility on housing services contains two stochastic regimes, which capture belief about future housing demand as the likelihood of switching from one regime to the other. (3) Rental markets are frictional, which prevent households with secondary houses to rent them out to those without houses.

### V.1. Households.

V.1.1. *Household environment.* The economy is populated by a continuum of multi-period lived overlapping generations of households whose lifecycle is divided between work and retirement. Age is indexed by  $j = 1, 2, \dots, J$ . Households retire at age  $J^{ret}$ . All households die with certainty after age  $J$ .

Expected lifetime utility of the household is given by

$$E_0 \left[ \sum_{k=1}^J \beta^{j-1} u_j(c_j, s_j) + \beta^J v(\mathbf{b}) \right]$$

where  $\beta > 0$  is the discount factor,  $c$  is the non-housing consumption,  $s$  is consumption of housing service. Each period, individual households have constant elasticity of substitution (CES) utility over non-housing consumption and housing services.

$$u(c, s; \phi) = \frac{[(1 - \phi)c^{1-\gamma} + \phi s^{1-\gamma}]^{\frac{1-\sigma}{1-\gamma}} - 1}{1 - \sigma}$$

where  $\gamma$  and  $\sigma$  determine the elasticity of substitution between non-housing consumption and housing services and the relative risk aversion, respectively. The housing utility weight  $\phi$  determines the share of housing services in total consumption.  $\phi$  is a stochastic variable that is common for all households, capturing the common belief about future aggregate housing demand.<sup>18</sup> In particular, we assume that it follows a two-state Markov process  $\phi \in \{\phi^L, \phi^H\}$ ,

---

<sup>18</sup>Our modeling of belief about future housing demand follows Kaplan, Mitman and Violante (2017). Different from their paper, however, the triggers of housing booms in our model are changes in housing policies, rather than exogenous changes in belief on future housing demand.

with transitional probability matrix  $\Pi$ ,

$$\begin{bmatrix} 1 - \Pi_{lh} & \Pi_{lh} \\ 0 & 1 \end{bmatrix}$$

Starting from a low housing preference state, there is probability  $\Pi_{lh}$  that the economy will move to high preference state and probability  $1 - \Pi_{lh}$  that the economy will stay in the same state next period. Once the economy moves into the high housing preference state, it will stay there forever. The stochastic belief about future housing demand can be interpreted as anticipated higher future demand for urban housing due to the relaxation of Hukou policy along urbanization.<sup>19</sup> The absorbing high housing preference state can be rationalized by the fact that once the Hukou policy is relaxed, it could not be reversed.<sup>20</sup> To isolate the impacts of policy changes, we assume that households are equipped with  $\phi_L$  in the initial steady state and stay in the same regime along the transition following the policy relaxation. In other words, changes in the preferences are not realized, which makes stochastic housing preference capture not a change in the fundamental, but only belief about higher housing demand in future. This modeling approach shares the key features of a rational bubble, but at the same time allows housing to provide housing services even for housing investors.<sup>21</sup>

The warm-glow bequest motive captures the fact that in China, old households tend to give their child or grandchild housing as bequest. It takes the functional form

$$v(\mathbf{b}) = \varphi \frac{(\mathbf{b} + \underline{b})^{1-\sigma} - 1}{1 - \sigma}$$

where the parameter  $\varphi$  captures the strength of bequest motive and the parameter  $\underline{b}$  is introduced to reflect the heterogeneity of bequest motive across households of different income levels.

Upon birth, households are ex-ante heterogeneous in their permanent lifetime labor ability,  $\eta_k$ , where  $k \in \{H, L\}$ . Moreover, working-age households are subject to uninsurable idiosyncratic shocks to their efficiency units of labor,  $\epsilon$ , where  $\epsilon$  follows a first-order Markov

---

<sup>19</sup>According to Wu, Gyourko and Deng (2012), since 1996, the urbanization rate has been grown by about 1.4 percentage points since 1996. Even with a slight slowing growth of urbanization since 2015, there are about 15 millions new people entering urban areas each year.

<sup>20</sup>The assumption of absorbing high housing demand state is for computational easiness. We can allow a positive probability for the economy to transit back to the low housing preference state, which would not change our results qualitatively.

<sup>21</sup>Several papers model China's housing as rational bubbles, such as Zhao (2015) and Chen and Wen (2017).

process. Total household labor income is given by  $y = w\varepsilon_j\eta_k\epsilon$ , where  $w$  denotes the wage rate per efficiency unit of labor, and  $\varepsilon_j$  denotes the deterministic age efficiency profile.<sup>22</sup> When a household retires, each period it receives a pension benefit equal to a fraction  $\xi$  of the income at the last period of working age, denoted as  $y = \xi y^{ret}$ .

Housing service can be obtained by either renting a house at a rental rate  $\rho_h$  or buying houses at a price  $p_h$ . Housing size for both rental and purchased housing are discrete. For purchased houses, housing size belongs to the set  $\mathcal{H}$ , while for rental housing, housing size belongs to the set  $\tilde{\mathcal{H}}$ .<sup>23</sup>

To capture rental market friction on the demand side, we assume that renting generates service less than one-for-one with the size of house, i.e.  $s = \omega\tilde{h}'$ .  $0 < \omega < 1$ . Both rental and owned housing depreciates at a rate  $\delta_h$ . When a household sells its home, it incurs a transaction cost  $\kappa_h p_h h$ , that is proportional to its housing value. Renter can adjust their housing size without cost.

Households can purchase multiple houses with total housing size  $h$ . We assume that there is an upper bound for the size of first house,  $\hat{h}$ , such that the size of first house is  $\min\{h, \hat{h}\}$ . The rest of  $h$ , with size  $\max\{0, h - \hat{h}\}$ , is counted as the second house. The second house provides no utility to the homeowner.

Households can finance the purchase of both first and second houses by mortgage if their age is less than  $J^M$  (corresponds to age 65 in reality). However, the maximum loan-to-value (LTV) ratio at origination differ between these two, denoted as  $\lambda_1$  and  $\lambda_2$  respectively. Specifically, at the time of origination, the borrower is subject to the following maximum LTV ratio constraint:

$$m' \leq \lambda_m(h')p_h h'$$

where

$$\lambda_m(h')p_h h' = \begin{cases} \lambda_1 p_h h' & \text{if } h' \leq \hat{h} \text{ and } j \leq J^M \\ \lambda_1 p_h \hat{h} + \lambda_2 p_h (h' - \hat{h}) & \text{if } h' > \hat{h} \text{ and } j \leq J^M \\ 0 & \text{if } j > J^M \end{cases}$$

---

<sup>22</sup>Since our model abstracts from the government budget, a household's labor income in our model should be interpreted as labor income after tax payment and government transfer.

<sup>23</sup>Note that in our model, housing is homogeneous in quality, while in reality different houses are different in quality. Therefore, different housing sizes in our model capture not only difference in physical sizes but also quality in reality.



All mortgage are subject to a fixed origination cost,  $\kappa_m$ , and the minimum mortgage payment in each period, denoted as  $\pi_m$ , follows constant amortization during the remaining lifetime.

$$\pi \geq \pi_m = \frac{r_m(1+r_m)^{J+1-j}}{(1+r_m)^{J+1-j}-1}m$$

where  $j$  denotes the borrower's age,  $r_m$  denotes the mortgage interest rate. The outstanding principle evolves according to

$$m' = (1+r_m)m - \pi$$

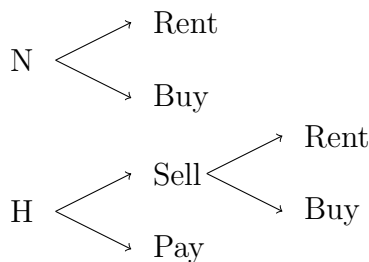
Consistent with China's institutional feature, mortgage, once originated, can not be refinanced. Finally, we assume that all mortgages are non-defaultable for simplicity.

Apart from housing, households can save in a one-period risk-free financial asset  $b$ , at an exogenous price  $q_b$ . We define the associated interest rate as  $r_b = 1/q_b - 1$ . Households could not borrow by short selling the financial asset. In other words, homeowners have no access to home equity line of credit in our model, which is consistent with China's institutional feature .

V.1.2. *Household's decision.* For each period, a household starts the period either with or without housing. A household without housing chooses between renting or buying a house. A household starting the period as an owner can choose to sell its house or keep its current house and make the mortgage payments. If it sells the house, it can then choose to either buy a new house or rent a house. Diagram I summarizes the beginning-of-period housing status and the housing tenure choices during the period.

Diagram I: Beginning-of-period Housing Status and Housing tenure choices

Beginning-of-period State		Intermediate/Choice			
w house	w/o house	sell	pay	rent	buy
H	N	s	p	r	b



We now describe a household's problem in recursive forms. Each period, a household's idiosyncratic state vector  $\chi = (b, m, h, y)$ . Denote  $\mu(\chi)$  as the measure of households across

individual states and the aggregate states vector as  $\Omega = (\phi, \mu)$ . We solve the problem of a household in two steps. First, the household chooses the intermediate housing status as described above. Conditional on its housing status, it then chooses the size of housing to either rent or purchase, together with the choice of consumption and saving in financial assets.

At the beginning of each period, a household without a house solves the following problem by choosing between renting or buying a house.

$$V_j^N(b, y; \Omega) = \max\{V_j^r(b, y; \Omega), V_j^b(b, y; \Omega)\}$$

where  $V_j^N$ ,  $V_j^r$ , and  $V_j^b$  denotes the value functions for a household without a house, value function of the renter and value function of the homebuyer, respectively. Note, by modeling renting versus owning a discrete choice, we rule out the possibility that a household purchases a house (of a smaller size than desired) and at the same time, rent another house for housing consumption. This makes the lumpiness of purchasing owned house matter for housing tenure choices.

The decision on whether to rent or buy a house depends on the costs and benefits of owning a house. The costs are down payments. The advantages of owning a house are as follows: (1) owning a house generates extra utility from housing services. (2) owning a house allows the household to enjoy potential capital gain with expected returns much higher than saving in the risk-free assets.

On the other hand, a household with a house faces the option of keeping or selling the house.<sup>24</sup> Accordingly, it solves the following problem:

$$V_j^H(b, m, h, y; \Omega) = \max\{V_j^p(b, m, h, y; \Omega), V_j^s(b, m, h, y; \Omega)\}$$

where  $V_j^H$ ,  $V_j^p$ , and  $V_j^s$ , denote the value functions for a household with a house, value function of keeping the house and value function of selling the house, respectively. If a household chooses to sell its house, it needs to pay all the outstanding mortgage debt associated with the sold house. Accordingly, the financial wealth after selling the house is

$$b_n = b + (1 - \delta_h - \kappa_h)p_h h - (1 + r_m)m \quad (1)$$

---

<sup>24</sup>For simplicity, we assume that once a household decides to sell its house, it sells all its housing stock.

After the household sells its house, it can then choose whether to rent or buy a new house by solving the following problem:

$$V_j^s(b, m, h, y; \Omega) = \max\{V_j^{sr}(b_n, y; \Omega), V_j^{sb}(b_n, y; \Omega)\}$$

subject to (1).  $V_j^{sr}$  is the value function for a household who sells its house and chooses to rent and  $V_j^{sb}$  is the function for a household who sells its house and choose to buy a new house.

Now we switch to the choice of housing size. Since a household dies after age  $J$ , we first describe the problem of a household with age  $j < J$ . For a renter, it solves the following problem.

$$V_j^r(b, y; \Omega) = \max_{\{c, b', \tilde{h}'\}} u(c, s; \phi) + \beta E_{y', \phi'} [V_{j+1}^N(b', y'; \Omega') | y, \phi]$$

subject to

$$\begin{aligned} s.t. \quad & c + \rho_h \tilde{h}' + q_b b' \leq b + y \\ & b' \geq 0 \\ & s = \omega \tilde{h}', \tilde{h}' \in \tilde{\mathcal{H}} \\ & \mu' = \Gamma_\mu(\mu; \phi', \phi) \end{aligned}$$

A homebuyer solves the following utility maximization problem

$$V_j^b(b, y; \Omega) = \max_{\{c, b', m', h'\}} u(c, s; \phi) + \beta E_{y', \phi'} [V_{j+1}^H(b', m', h', y'; \Omega') | y, \phi]$$

subject to

$$\begin{aligned} s.t. \quad & c + p_h h' + q_b b' + \kappa_m \cdot 1_{\{m' > 0\}} \leq b + y + m' \\ & b' \geq 0, m' \geq 0 \\ & s = h', h' \in \mathcal{H}^1 \\ & m' \leq \lambda_m(h') p_h h' \\ & \mu' = \Gamma_\mu(\mu; \phi', \phi) \end{aligned}$$

A homeowner who chooses to keep its house and pay mortgage solves the following problem:

$$V_j^p(b, m, h, y; \Omega) = \max_{\{c, b', \pi\}} u(c, s; \phi) + \beta E_{y', \phi'} [V_{j+1}^h(b', m', h', y'; \Omega') | y, \phi]$$

subject to

$$\begin{aligned}
 s.t. \quad & c + \delta_h p_h h + \pi + q_b b' \leq b + y \\
 & b' \geq 0 \\
 & s = \min\{h', \hat{h}\}, h' = h \\
 & \pi \geq \pi_m \equiv \frac{r_m(1+r_m)^{J+1-j}}{(1+r_m)^{J+1-j} - 1} m \\
 & m' = (1+r_m)m - \pi \\
 & \mu' = \Gamma_\mu(\mu; \phi', \phi)
 \end{aligned}$$

Similar to a renter's problem, a household who sells its house and chooses to rent solves

$$V_j^{sr}(b_n, y; \Omega) = \max_{\{c, b', \tilde{h}'\}} u(c, s; \phi) + \beta E_{y', \phi'} [V_{j+1}^n(b', y'; \Omega') | y, \phi]$$

subject to

$$\begin{aligned}
 s.t. \quad & c + \rho_h \tilde{h}' + q_b b' \leq b_n + y \\
 & b' \geq 0 \\
 & s = \omega \tilde{h}', \tilde{h}' \in \tilde{\mathcal{H}} \\
 & \mu' = \Gamma_\mu(\mu; \phi', \phi)
 \end{aligned}$$

Finally, similar to a home buyer's problem, a household who sells its house and choose to buy a new house solves

$$V_j^{sb}(b_n, y; \Omega) = \max_{\{c, b', m', h'\}} u(c, s; \phi) + \beta E_{y', \phi'} [V_{j+1}^h(b', m', h', y'; \Omega') | y, \phi]$$

subject to

$$\begin{aligned}
 s.t. \quad & c + p_h h' + q_b b' + \kappa_m \cdot 1_{\{m' > 0\}} \leq b_n + y + m' \\
 & b' \geq 0, m' \geq 0 \\
 & s = h', h' \in \mathcal{H} \\
 & m' \leq \lambda_m(h') p_h h' \\
 & \mu' = \Gamma_\mu(\mu; \phi', \phi)
 \end{aligned}$$

**V.2. Rental sector.** Each period, a representative rental company purchases housing in the housing market and rents them to renters. The rental company can frictionlessly buy and sell housing units subject to an operating cost  $\psi$  for each unit of housing rented out. The problem of the representative rental company is

$$J(\tilde{H}; \Omega) = \max_{\tilde{H}'} [\rho_h(\Omega) - \psi] \tilde{H}' - p_h(\Omega) [\tilde{H}' - (1 - \delta_h) \tilde{H}] + \frac{1}{1 + r_b} E_{\Omega'|\Omega} J(\tilde{H}'; \Omega')$$

The zero profit condition gives the equilibrium rental rate as

$$\rho_h(\Omega) = \psi + p_h(\Omega) - \frac{1 - \delta_h}{1 + r_b} E_{\Omega'} [p_h(\Omega') | \Omega].$$

In other words, the rent is simply the user cost of housing plus the operating cost.

Note that in our model, households with more than one house do not have the option of renting their second house. This may capture various frictions on the supply side of China's rental market, such as the information asymmetry between the landlord and the tenants due to the absence of credit scores on potential tenants. Also, there lack laws to punish default on rental payments. Third, there is no property tax or vacancy taxes. All these frictions would discourage homeowners from renting their secondary houses, if available, and instead leave it vacant.

**V.3. Production sector.** There are two production sectors in the economy: a non-housing consumption good sector and a construction sector, which produces new houses. Labor is perfectly mobile across sectors.

The competitive firms in the non-housing production sector use a constant returns to scale technology in labor

$$Y = \Theta N_c$$

where  $\Theta$  is aggregate labor productivity and  $N_c$  are aggregate units of efficiency labor. The first-order condition for labor pin down the wage rate as  $w = \Theta$ .

In the construction sector, the government issues new permits equivalent to  $\bar{L}$  units of land each period, and these permits are sold in a competitive markets to real estate developers. As a result, all rents from land ownership accrue to the government. After acquiring the land permit, competitive real estate developer combines labor and land to produce new houses according to a Cobb-Douglas technology

$$\begin{aligned} & \max_{N_h} p_h I_h - w N_h \\ & s.t. I_h = (\Theta N_h)^\alpha (\bar{L})^{1-\alpha} \end{aligned}$$

The Cobb-Douglas technology implies that the developer makes no profit in equilibrium. The first-order condition, together with the equilibrium condition  $w = \Theta$ , gives rise to the investment function

$$I_h = (\alpha p_h)^{\frac{\alpha}{1-\alpha}} \bar{L}$$

**V.4. Equilibrium.** Denote  $\chi^H = (b, m, h, y)$  and  $\chi^N = (b, y)$  as the idiosyncratic state vectors for homeowners and non-homeowners, respectively. Also, let  $\mu_j^H$  and  $\mu_j^N$  be the measure of these two types of households at age  $j$ . A recursive competitive equilibrium consists of household value functions  $\{V_j^N(\chi^N; \Omega), V_j^H(\chi^H; \Omega), V_j^r(\chi^N; \Omega), V_j^b(\chi^H; \Omega), V_j^p(\chi^H; \Omega), V_j^s(\chi^H; \Omega)\}$ , household decision rules, aggregate functions for construction labor  $N_h(\Omega)$ , rental units stock  $\tilde{H}'(\tilde{H}; \Omega)$ , homebuyers' housing stock  $H'(H; \Omega)$ , housing investment  $I_h(\Omega)$ , rental price  $\rho_h(\Omega)$ , house price  $p_h(\Omega)$ , and a law of motion for the aggregate states:

- (1) Households optimize with value functions and associated decision rules;
- (2) Construction sector firms maximize profits with associated labor demand and housing investment functions  $\{N_h, I_h\}$ ;
- (3) The labor market clears at the wage rate  $w = \Theta$ ;
- (4) The rental market clears at price  $\rho_h$ ;
- (5) The housing market clears at price  $p_h$ ;

$$\tilde{H}' + H' = (1 - \delta_h)(\tilde{H} + H) + I_h$$

- (6) The aggregate law of motion is induced by the exogenous stochastic processes and all the decision rules, and it is consistent with individual behavior.

**V.5. Calibration.** We calibrate the model to match the key aggregate and cross-sectional moments before the relaxation of LTV policy in 2014Q4. When necessary to choose a specific year, we use 2013, which corresponds to the year before the LTV policy relaxation. The initial steady state of the model, therefore, maps into the Chinese economy before the LTV policy relaxation in 2014Q4. The resulting parameter values are summarized in Table 9 and the targeted moments are in Table 10.

There are two categories of model parameters to calibrate. One category contains parameters assigned without the need to solve for the model equilibrium. The other contains parameters chosen for the model moments to target specific moments from the data.

**Demography** Each period corresponds to a two-year horizon. Households enter the economy at age 20, retire at age 55 (corresponding to  $J^{ret} = 19$ ), and live until age 76 (corresponding to  $J = 29$ ), which is the average life expectancy in China. In addition, the

share of high-ability households is calibrated to match the share of households with college and above degree in CHFS data. Accordingly, high (low) labor-ability households in our model correspond to households with college and above (high school and below) degree in the data. In the results below, we therefore call households with high permanent labor ability in our model as households with high education to compare with the data counterparts.

**Preference** We set  $1/\gamma$ , the elasticity of substitution between non-housing consumption and housing services, to be 1.25, following Piazzesi, Schneider and Tuzel (2007). The risk aversion parameter,  $\sigma$ , is set to 2, which is standard in the literature. The utility discount factor  $\beta$  is calibrated to target the average ratio of wealth to labor income of 9.2 in 2012, which is estimated by Xie and Jin (2015) using CFPS data. The utility discount parameter for renting,  $\omega$ , is set to be 0.70 to target the average home ownership rate of China in 2013, which was 86%. The housing preference parameter at low state,  $\phi_L$ , is chosen so that the average share of housing in total consumption expenditure is 0.2 in the stochastic steady state, consistent with the weight used in the official CPI basket in China. We choose  $\phi_H$  to target the home ownership rate of second houses in 2013, 14.6%. The transition probability  $\Pi_{lh}$  is set to target the average ratio of outstanding mortgage debt to income among homeowners in 2013, which is 3.38. The two parameters for bequest motives,  $\varphi$  and  $\mathbf{b}$ , are jointly calibrated to target two moments simultaneously, the net worth ratio of households aged 75 to those aged 55 within each permanent income group.

**Endowment** The age profile of labor efficiency units are taken from He, Ning and Zhu (2017), who use the data in China Health and Nutrition Survey (CHNS) to estimate them. The log of idiosyncratic labor income shocks are specified as AR(1) process with the value of  $\rho_\epsilon$  and  $\sigma_\epsilon$  taken from İmrohoroğlu and Zhao (2018). We normalized the permanent lifetime labor ability  $\eta_L$  to be 1 and set  $\eta_H = 1.6$  to match the the college premium in 2011, an estimate by Cooper and Zhu (2018) using CHNS data. The social security replacement rate is set to be 0.5, which is the average national replacement rate during 2010-2013.

**Housing** To discipline the set of owned house size  $\mathcal{H}$ , we follow the strategy of Kaplan, Mitman and Violante (2017) to choose three parameters: the minimum size of owner-occupied units, the number of house sized in that set, and the gap between house sizes. We target three moments of the distribution of the ratio of housing wealth to net wealth, defined as the sum of housing and net financial wealth, among home owners: the 10th percentile, median and the 90th percentile. This is because the distribution of housing wealth at the

initial steady state is crucial for the quantitative impacts of LTV relaxation at both aggregate and household levels. Similarly, to discipline the set of rented house size  $\tilde{\mathcal{H}}$ , we target a ratio of the average earnings of home owners to renters of 2.87, while keep other grids of rental housing the same as the those for the first house. Finally, we choose the threshold value of second house,  $\hat{h}$ , to target the share of mortgage amount for second houses in total mortgage amount in 2013, which is about 5%.

The housing depreciation rate,  $\delta_h$  is set to 2%, the estimated depreciation rate on China's urban owner-occupied housing by OECD. The transaction cost for selling a house,  $\kappa_h$  equals 3% of the value of house. The rental company operating cost is chosen to match the home ownership rate of households under 30. The construction technology parameter  $\alpha$  is set to be 0.8, so that price elasticity of new housing supply equals 4, about the average value by Wang, Chan and Xu (2012) for the 35 major cities in China. The value of new land permit  $\bar{L}$  is set to target the housing price to income ratio in 2012. According to E-house China, for the 35 major cities in China, the average house price to income ratio is 7.3 in 2012.

**Financial Instruments** The risk-free interest rate  $r_b$  is set to be 3% per annum, which is the average benchmark deposit rate during 2010-2013. The mortgage interest rate  $r_m$  is set to be 4.94%, which is the average mortgage interest rate for households (CHFS 2013),<sup>25</sup> The origination cost for mortgage  $\kappa_m$  is set to target the share of mortgage origination numbers of non-primary houses in total mortgage numbers in 2013, which is about 5%.

**LTV Policy** We calibrate the minimum down payment ratio for the first and second houses,  $1 - \lambda_1$  and  $1 - \lambda_2$ , respectively to target the LTV policies before 2014Q4. Accordingly,  $\lambda_1 = 0.7$  and  $\lambda_2 = 0.3$ .

**V.6. Household Distributions in Stochastic Steady State.** Before examining the dynamics of the economy following a relaxation of LTV policy, we first present a set of model predictions at the stochastic steady state that were not explicitly targeted in the calibration. We first examine the model predictions along the life cycles, followed by its cross-sectional implications regarding wealth and housing.

**Lifecycle Implications** Figure 7 plots the lifecycle profiles for home ownership and wealth, both in the model and in the historical data as given by CHFS. The top two panels

---

<sup>25</sup>In China, households with housing provident funds can enjoy a lower mortgage interest rate than the market rate. Since our model abstracts from housing provident funds, mortgage interest rates correspond to the average mortgage interest rate for households with and without housing provident funds, which is what CHFS data contains.



display the overall home ownership and that for secondary house. As the left panel shows, in both model and data, the lifecycle profile of home ownership rates rises rapidly from around 50% to a level above 80% at age 35. The home ownership rate rises at young ages in the model because it takes time for households to accumulate enough savings to overcome the down payment constraint. In the data, the home ownership rate after age 35 levels off at around 85%. By contrast, in the model home ownership rates continue to increase until age 55, after which it starts to decline. In our model, the home ownership rate at age 70 is above 0.80, close to the data counterpart. The high home ownership rate of old households is because the warm-glow bequest motive encourage them to save in housing even if they approach the maximum age. The top right panel plots the home ownership rate for secondary houses. In both model and data, this profile exhibits a hump-shape. In the data, home ownership rate for secondary house peaks around age 45, while in the model, the peak occurs at age 55. After age 55, home ownership rate in the model drops rapidly, which again reflects households' preference for current consumption as they become aged.

The middle two panels shows net wealth, by age, divided by average net wealth across all households for the two income groups. In the data, the lifecycle profile of net wealth for both income groups are hump-shaped, peaking around age 55. Consistent with the data, in our model total wealth for both income groups exhibit a hump shape and peak at age 55. The bottom two panels, which display the lifecycle profile of housing wealth for both income groups, show a similar pattern. In particular, our model can replicate reasonably well both age profile of wealth housing wealth for households with permanent high income. Again, this is because the incorporation of bequest motive.

**Cross-sectional Implications** Table 11 reports additional cross-sectional moments of interest for both model and data. The top panel reports the Gini coefficients for net wealth and net housing wealth. We see that the wealth distribution in our model closely reproduces its counterparts in the data, especially for net housing wealth. The Gini coefficients for housing net wealth in the model is 0.51, compared with 0.56 in the data. The middle panel reports the share of net wealth across households. Our model can replicate reasonably well the share of net wealth for both bottom and top quintiles. In our model, households in the bottom quintile hold 3% of net wealth, while in the data it is 1%. For the top quintile, households in the data hold 61.8% of net wealth, while in the model they hold 54% of net wealth. The bottom panel reports the distribution of housing wealth to income ratio for

homeowners. Our model can match the data fairly well for the bottom quintile. It, however, under-predicts the housing wealth to income ratio for the median and the top quintiles.

To summarize, our model does a reasonably well job in replicating both the lifecycle profiles of home ownership rates and wealth and the distribution of housing net wealth and total net wealth. Since the initial age-profile of home ownership and the distribution of housing net wealth among homeowners are crucial for transmission of housing policies into housing prices, housing demand and consumption, our model provides a reasonable benchmark for exploring the quantitative impacts of housing policy.

## VI. IMPACTS OF HOUSING POLICY

This section provides a quantitative assessment of the aggregate and distributional impacts of various housing policy. We started with the policy experiment of a surprising relaxation of LTV policy for second houses, which mimics the relaxation of LTV policy for non-primary houses during the period of 2014Q4 and 2016Q3. We then explore the impacts of alternative counterfactual policies on housing prices, mortgage and consumption.

**VI.1. Benchmark Results.** Our benchmark policy experiment is to reduce the minimum down payment ratio for the second house. Specifically, the economy is at the steady state at period 0. At the beginning of period 1, the maximum LTV ratio for second houses increased from 0.3 to 0.7 unexpectedly. Since one period in our model corresponds to two years, the relaxation in LTV policy lasts only for one period, consistent with the period of LTV policy relaxation 2014Q4-2016Q3. During this period, however, all households expect that the new LTV policy, i.e.  $\lambda_2 = 0.7$ , will last forever. In period 2, the LTV policy,  $\lambda_2$ , experiences a surprise reversal back to the initial steady state value of 0.3. Despite the transitory nature of the policy changes, since all cohorts alive at period 1 experience such policy changes, the transitional dynamics last at least  $J$  periods. We keep the minimum down payment ratio for the first house and other parameters, such as mortgage interest rates, unchanged throughout the experiment.

Table 12a reports the aggregate effects of this policy change. For the model results, we compute the annualized growth rates of various variables to compare the actual data. Aggregate housing price increases by 2.36% per annum. In other words, changes in LTV policy for second house alone can explain about 47.4% of the observed increase in housing

price growth between 2011Q1-2014Q3 and 2014Q4-2016Q2 (from 2.32% to 7.3%).<sup>26</sup> The aggregate newly issued mortgage loan amount is 28.55% higher than that in the initial steady state, explaining about 94% of the increase in new mortgage amount during this period (30.38%). The increase in the mortgage origination numbers is 16.82% higher than its counterpart in the steady state, which is close to their data counterpart (20.38%). For primary houses, the percentage increase in both mortgage amount and number are close to their data counterparts, though somewhat smaller than the corresponding numbers for the total mortgage. Our numerical results suggest that the relaxation of LTV policy for secondary houses is the key reason for the observed mortgage boom, and in particular for the mortgage boom of the primary houses via the equilibrium housing price. On the other hand, aggregate consumption drops by 0.28%, which explains about one third of the fall in the actual data.

Table 12b reports the simulated results on changes in mortgage shares and consumption across households of different age-education groups. The left two columns show that among all age-education groups, the middle-aged high-educated households experience the largest increase in the share of mortgage amounts, by 9.90%, which is close to the 13.45% in the actual data. Such an increase in the share of mortgage amount by middle-aged high-educated households can largely be explained by the increase in mortgage numbers by the same group (9.80% as contrast to a 8.12% in the data). By contrast, the shares of both mortgage loan amount and origination numbers by young high-educated households drop, by 3.97% and 5.27%, respectively. In terms of consumption, the right two columns show that, consistent with the data, the middle-aged high-educated households experienced a decline in consumption by 1.18%, accounting for one third of the actual decline in consumption growth of the same group in the data. On the other hand, our model implies that consumption of both education groups of young households decline, and especially for the low-educated ones. This is mainly because in our model, as housing price increase, housing rental rate also increases. This increase in rental rate imposes a negative income effect on low-educated young households, which are mainly renters.

As a further check of the model mechanisms, we report in Table 12c the simulated results on changes in mortgage shares of the 1st houses of different age-education groups. Similar

---

<sup>26</sup>Other factors than relaxation of LTV policies, such as rising expectation of future housing prices and the associated intergenerational transfer from parents to child, may explain the remaining half of the increase in housing prices.

to the pattern for the total mortgage, we see that across all age-education groups, only the middle-age high-educated households experienced a significant increase in the share of mortgage. Specifically, the mortgage amount share increases by 13.23% during the first period of transition, close to their data counterparts of 11.86%. Most of this increase is accounted for by an increase in the mortgage number share (10.84%). By contrast, the young high-educated households experienced a decline of mortgage shares in both amount (2.78%) and numbers (4.88%). Therefore, our model can explain not only the aggregate but also the distributional impacts of changes in LTV policy for the secondary houses on mortgage credit.

What's the long-run impact of a relaxation of LTV policy on household consumption? The left panel of Figure 8 plots the simulated transition path of non-housing consumption of middle-age high-educated households in response to a relaxation in LTV policy for non-primary houses under the benchmark experiment. We see that despite the transitory nature of the relaxation of LTV policy (one period), the impact is persistent. Consumption dropped by more than 2% in the first two years (on impact) following the relaxation of LTV policy on second houses and kept below the steady state level until period five (the tenth year). This is despite the fact that the maximum LTV ratio on second houses reverted to its initial steady state level in period two. The reason for the persistence of the impacts of LTV policy on consumption is the interaction of the illiquidity of housing and thus the persistent impacts of policy changes on the mortgage debt burden of households who purchased housing during the policy relaxation period. This can be seen from the right panel, which plots the simulated outstanding mortgage debt to income ratio of middle-age high educated households, arguably the main investors of housing during the LTV policy relaxation period. The outstanding mortgage debt to income ratio jumped from about 2 to 2.4 in the first two years of transition path. The tightening of the LTV policy caused the mortgage DTI ratio to decline since period 2. However, it does not return to its initial steady state level until period 5, at which non-housing consumption returns to the steady state level as well. Therefore, despite the transitory nature of the relaxation of LTV policy, it has persistent effects on household consumption.

Our results on the negative responses of consumption of homeowners (middle-aged high-educated households) to higher housing prices is in sharp contrast to the literature, which emphasizes the wealth effects of housing prices. Despite the positive wealth effects of higher housing prices on middle-aged high educated households, most of whom are existing homeowners at the policy relaxation, these households choose to switch to a larger house via

mortgage finance in expectation of high capital gain in future. The fall in their consumption on impact reflects an intertemporal substitution of consumption into the future. However, such a fall in consumption will persist since those switch to large houses via higher leverage (against their income) are more heavily mortgage debt burdened in future. Note that consumption of old households with high education in model and data increases in response to the relaxation of the LTV policy. This is because old households discount future consumption heavily. As a result, the positive wealth effects of higher housing prices drive up the non-housing consumption of the old households who were homeowners at the initial steady state.

**VI.2. Roles of Increasing Housing Prices.** An increase in the maximum LTV ratio for secondary houses may affect households' housing and mortgage demand via both its direct effects and indirect effects by influencing the housing prices. To quantify the role of increasing in housing prices, we conduct a counterfactual experiment in which housing prices are fixed at the initial steady state while changes in maximum LTV ratio for secondary houses are the same as our benchmark experiments. The difference of results between these two experiments measures the general equilibrium effects of the policy change.

Table 13a reports the aggregate impacts of increasing maximum LTV ratio from 0.3 to 0.7. Comparing the first and the second columns, we see that the increase in total mortgage in terms of both amount and numbers drops significantly when housing prices are fixed. More importantly, the mortgage demand for the primary houses has decreased (by 2.24%), as contrast to the benchmark experiment and the data, in which mortgage for primary houses experienced a significant increase. This suggests that an increase in housing prices is the key to understand the increase of the mortgage and housing demand, especially for the primary houses.

Table 13b reports the distributional effects of the change in the housing policy in the counterfactual experiment. For middle-aged high educated households, the increase of the mortgage in terms of both amount and number has dropped to 3.08% (from 9.90% in the benchmark experiment) and 1.75% (from 9.80% in the benchmark experiment), respectively. The corresponding values for primary houses have become even negative. This suggests that, again, an increase in housing prices holds the key to understand the increase in housing and mortgage demand for middle-aged high-educated households.

How an increase in housing prices affect the housing and mortgage demand, especially by middle-aged high educated households? In our model, at any period, mortgage demand arise

from from two group of households, those who become new homeowners (from renters) and those changes their housing position. Accordingly, an increase in mortgage demand following the policy experiment may be contributed by an increase in churning up rate, the fraction of households who choose to churn up their housing.

Table 14a reports the contribution of net increase in churning up rate to the increase in mortgage and housing demand. The net increase in churning-up rate contributes to about two third of the increase in mortgage amount, more than 90% of the increase in the mortgage numbers and about 70% of the increase in housing demand. Table 14b decompose the contribution of the net increase in churning-up rates across age-education groups. Across different households ages, the contribution of net increase in churning-up by those of middle-aged to the increase in mortgage and housing is higher than other age groups. In particular, the net increase of churning-up rate by middle-aged high-educated households contribute to about one third of the increase in mortgage amount and housing demand.

Again, the increase in equilibrium housing prices plays the key role behind the increase in churning-up rate by the middle-aged high educated households. Figure 9 plots the age profile of churning up rate in three cases: the steady state, the benchmark experiment and the counterfactual experiment, with the left (right) panel for low (high) income households. We see that compared with the steady state, in response to the policy relaxation, there is a significant increase in the churning-up rate in our benchmark result for the high educated households aged around 30-40, whereas the increase in churning up rate for other age groups and for households of low income are small. This result is consistent with the the results of the decomposition of the contribution of churning-up rate by age and education. However, in the counterfactual experiment where price is fixed, the age profiles of churning-up rate for both income groups barely changes from their counterparts in the steady state.

An increase in housing prices affect the churning-up decision via two channels: The first is the housing wealth effect: an increase in housing price would increase the capital gain for existing homeowners by selling their housing stock. The larger is the initial housing position, the larger is the capital gain. This would encourage households with low idiosyncratic income realization, who would otherwise not to churn up housing in the initial steady state, to churn up their housing. Since middle-income households, especially high-educated, tend to have large initial housing position, the housing wealth effects tend to be large for this group. A second effect is the substitution effects. An increase in housing price would increase the marginal utility cost of churning up housing in terms of forgone consumption. And the

smaller is the level of consumption relative to the level of housing, the larger is the effect. With binding borrowing constraint, young homeowners tend to have lower consumption than the middle-aged households, which implies a larger increase in utility loss of churning-up when housing price increases. This explains why the increase in churn-up concentrates in the middle-aged high-educated households.

**VI.3. Alternative policy experiments.** This section explores the role of two alternative policies in the housing boom: the reduction of minimum down payment ratio for the primary house and the cut of interest rates. Both policies were conducted during 2014Q4-2016Q3 and may contribute to the mortgage boom and housing price increases. Thus, our focus is on their distributional impacts, which serve as identification schemes of the quantitative importance of various policies in housing booms.

The first alternative policy experiment is to increase  $\lambda_1$  from 0.7 to 0.8 for one period, during which all agents expect that such change would last forever. After that,  $\lambda_1$  goes back to its initial steady state level. This replicates the changes in LTV policy for primary houses during 2014Q4-2016Q3. We keep all other parameters unchanged during the transitional dynamics.

Table 15a reports the distributional impacts of this policy experiment across households of different age-education groups. There are two notable differences from our benchmark result. First, the mortgage share of middle-aged households of low education increases significantly (7.45% for mortgage amount and 9.34% for mortgage number), while in both data and our benchmark experiment, it declines or stays the same. The reason is straight forward: the middle-aged households with low education are the group constrained for housing consumption. An increase in maximum LTV ratio of the primary house relax their borrowing constraint for housing consumption. Hence, they would increase their leverage against housing. Such a result, which is the standard channel for maximum LTV ratio to affect housing demand, is at odd with our empirical findings.

Second, the consumption of middle-aged households with high education increases by 1.81% in this experiment, in contrast to a decline in our benchmark experiment and data. The increase of consumption by this age-education group is because an increase in the maximum LTV ratio for primary houses indeed relaxed the borrowing constraint of middle-aged households with high education for housing investment. By contrast, in our benchmark experiment, an increase in the maximum LTV ratio for secondary houses does not allow

existing homeowners to take more leverage when they trade up their primary house. As a consequence, they have to reduce their current consumption.

In the second alternative experiment, the deposit rate is cut by 1.5%. This policy change replicates the loosening of monetary policy since 2014Q4. The lower interest rate is maintained throughout the transition and the new steady state.

Table 15b reports the distributional impacts of this policy change on households of different age-education groups. First, there is no significant increase in mortgage share for middle-aged high-educated households. Second, another notable difference with the benchmark result is that the consumption of middle-aged households with high education increase by 3.86% in response to such policy change, which is at odd with the data. Intuitively, with a lower interest rate hence the price of current consumption in terms of future consumption, the middle-aged households would like to increase non-housing consumption.

In summary, both alternative policy experiments, despite their positive impacts on aggregate housing demand, lead to counterfactual distributional impacts on mortgage demand or consumption. Given the consistency of our benchmark results with the data in terms of both the aggregate and distributional effects, we therefore argue that the cut of the minimum down payment ratio for the non-primary house is the main factor for the housing boom during 2014Q4-2016Q3.

## VII. CONCLUSION

This paper investigates the aggregate and distributional impacts of housing policy, using China's recent relaxation of LTV policy as a policy experiment. With two unique micro-level data sets, we find that a relaxation of LTV policy on non-primary houses stimulated new mortgage loan for middle-aged high-educated households at the sacrifice of young households. Such a policy, moreover, slowed down consumption growth of middle-aged, high-educated households.

We build a dynamic OLG equilibrium model with household heterogeneity to account for the empirical findings. Our theory uncovers a novel channel for changes in credit conditions to affects housing prices and mortgage demand via a self-enforcing mechanism: a reduction in the down payment ratio for non-owner-occupied housing triggers an initial housing price increase by encouraging housing investment. This, in turn, generates capital gains for existing homeowners when the policy change and encourage them to switch to a large house in expectation of future capital gain. Accordingly, it squeezes out the mortgage origination



for young households, especially those would-be-homebuyer, and reduces non-housing consumption. This is because, despite capital gain from higher housing price, middle-aged high educated households chose to reduce consumption persistently, due to both an intertemporal substitution into future consumption and heavier mortgage-debt burden relative to their income.

Our findings bear important normal implications of housing policies in China. We show that, as an unintended consequence of the change in LTV policies, higher housing prices makes housing less affordable to young households who were not homeowners when the policy changes. This policy change, moreover, crowds out consumption for those already or would-be homeowners. Furthermore, with frictional rental markets and the absence of property or vacancy taxes, such a policy exacerbates the resource misallocation between rich households who hold second houses vacant and poor households who would rent a house.

TABLE 1. Summary Statistics for Mortgage Origination Data

	2011Q1-2014Q3		2014Q4-2016Q3		2011Q1-2018Q2	
	Mean	SD	Mean	SD	Mean	SD
<i>Panel A: Summary Statistics for Borrowers Buying the 1st Houses</i>						
Age	34.50	9.02	34.68	8.81	34.50	8.98
Fraction of Borrowers with College and above Degree	0.47	0.50	0.59	0.49	0.56	0.50
House Size	102.68	31.12	104.79	30.13	104.91	30.72
House Value (Thousand RMB)	681.73	637.73	847.03	803.86	817.59	765.78
Mortgage Loan (Thousand RMB)	425.97	407.15	542.76	514.91	519.94	485.21
Monthly Mortgage Payment (RMB)	3302.99	2898.55	3738.55	3298.59	3656.74	3155.44
Loan-to-Value (LTV) Ratio	0.63	0.11	0.65	0.12	0.64	0.12
Mortgage Rate (Percent)	6.55	0.63	5.14	0.83	5.62	1.03
Mortgage Debt to (Annual) Income Ratio	4.00	1.44	4.20	1.69	4.20	1.63
Number of Borrowers	1,212,014		919,998		3,011,765	
<i>Panel B: Summary Statistics for Borrowers Buying the 2nd or above Houses</i>						
Age	38.60	7.69	39.37	7.73	38.81	7.80
Fraction of Borrowers with College and above Degree	0.62	0.49	0.72	0.45	0.71	0.45
House Size	115.09	42.46	117.02	42.62	115.18	41.56
House Value (Thousand RMB)	1100.55	1010.32	1313.86	1127.04	1288.71	1103.28
Mortgage Loan (Thousand RMB)	426.03	441.76	776.22	698.76	682.86	626.36
Monthly Mortgage Payment (RMB)	3938.15	3761.44	5491.67	4711.23	5017.41	4285.29
Loan-to-Value (LTV) Ratio	0.38	0.07	0.59	0.13	0.53	0.15
Mortgage Rate (Percent)	7.40	0.37	5.20	0.77	5.77	1.13
Mortgage Debt to (Annual) Income Ratio	2.54	1.28	3.42	1.80	3.14	1.71
Number of Borrowers	66,962		80,339		259,024	

Note: This table reports descriptive statistics for the main variables employed in the analysis. The data source is from the bank’s loan-level mortgage origination data. The sample contains all new mortgage loans advanced by this bank for purchasing new, residential properties, covering the 70 major cities that correspond to the city sample in National Bureau Statistics (NBS) 70-city housing price index.

TABLE 2. Summary Statistics for CHFS Data

	2013		2015		2017	
	Mean	SD	Mean	SD	Mean	SD
Age	50.34	14.98	52.15	14.93	54.41	14.94
Consumption (Thousand RMB)	50.62	51.16	55.39	57.60	54.28	53.29
Income (Thousand RMB)	75.28	94.83	81.21	103.59	98.83	112.84
Outstanding House Mortgage (Thousand RMB)	24.58	211.99	30.83	197.85	41.05	221.52
Net Wealth (Thousand RMB)	797.43	1249.87	1010.68	1527.13	1255.06	1896.83
Share of Housing Asset in Net Wealth (Percent)	75.46	44.67	76.06	41.23	72.71	42.24
Homeownership (Percent)	86.02	34.68	89.25	30.98	88.08	32.40
Number of Obs	19,203		25,635		27,279	

Note: This table reports descriptive statistics for the main variables employed in the analysis. Outstanding house mortgage and mortgage debt over income ratio include households without mortgage. The data source is from the urban sample of China Household Finance Survey.

TABLE 3. Mortgage Share in 2013

(A) Mortgage Amount Share in 2013: All Houses		
	High School and Below	College and Above
Age < 30	11.77	25.60
$30 \leq \text{Age} < 50$	27.04	29.91
Age $\geq 50$	3.63	2.05
(B) Mortgage Amount Share in 2013: 1st House		
	High School and Below	College and Above
Age < 30	12.30	26.55
$30 \leq \text{Age} < 50$	27.26	28.29
Age $\geq 50$	3.64	1.95
(C) Mortgage Number Share in 2013: All Houses		
	High School and Below	College and Above
Age < 30	13.41	22.73
$30 \leq \text{Age} < 50$	33.98	24.15
Age $\geq 50$	4.09	1.64
(D) Mortgage Number Share in 2013: 1st House		
	High School and Below	College and Above
Age < 30	14.00	23.59
$30 \leq \text{Age} < 50$	34.19	22.59
Age $\geq 50$	4.09	1.54

Note: The table reports the mortgage origination share in 2013. The data source is the proprietary loan-level data for mortgage origination from one of the largest banks in China.

TABLE 4. Mortgage Share Change between 2013 and 2015

(A) Mortgage Amount Share Change between 2013 and 2015: All Houses

	High School and Below	College and Above
Age < 30	-4.13	-2.58
$30 \leq \text{Age} < 50$	-6.66	13.45
Age $\geq 50$	-0.90	0.82

(B) Mortgage Amount Share Change between 2013 and 2015: 1st House

	High School and Below	College and Above
Age < 30	-3.79	-1.17
$30 \leq \text{Age} < 50$	-6.47	11.86
Age $\geq 50$	-0.98	0.56

(C) Mortgage Number Share Change between 2013 and 2015: All Houses

	High School and Below	College and Above
Age < 30	-2.66	-0.09
$30 \leq \text{Age} < 50$	-5.60	8.12
Age $\geq 50$	-0.37	0.60

(D) Mortgage Number Share Change between 2013 and 2015: 1st House

	High School and Below	College and Above
Age < 30	-2.46	0.52
$30 \leq \text{Age} < 50$	-5.36	7.30
Age $\geq 50$	-0.42	0.42

Note: The table reports the mortgage share change between 2013 and 2015. The data source is the proprietary loan-level data for mortgage origination from one of the largest banks in China.

TABLE 5. Household Consumption Growth Rate

(A) Average Household Consumption and Income Growth Rate (Percent)

	2013-2015	2015-2017	Difference
Consumption	3.97	3.11	-0.86*
Income	6.51	10.31	3.80***

(B) Household Consumption and Income Growth Rate by Age (Percent)

	Consumption			Income		
	2013-2015	2015-2017	Difference	2013-2015	2015-2017	Difference
Age < 30	4.89	6.03	1.14	10.22	12.71	2.49
30 ≤ Age < 50	4.65	2.65	-2.00***	8.77	10.95	2.18**
Age ≥ 50	3.14	3.25	0.11	3.64	9.66	6.02***

(C) Changes in Household Consumption and Income Growth Rate (percent) by Age and Education

	Consumption		Income	
	Low Edu	High Edu	Low Edu	High Edu
Age < 30	1.39	0.04	2.99	0.24
30 ≤ Age < 50	-1.40	-3.59***	1.19	5.15***
Age ≥ 50	-0.09	1.35	6.27***	7.76***

Note: The table reports the growth rates of consumption and income. Panel c reports the changes in annualized household consumption and income growth rates between 2015-2017 and 2013-2015 episodes. The data source is China Household Finance Survey. The numbers reported in this table are annualized growth rates. Significance: \*  $p < 0.1$ , \*\*  $p < 0.05$ , \*\*\*  $p < 0.01$ .

TABLE 6. Household Consumption Growth Rate: Homeowner

(A) Average Household Consumption and Income Growth Rate (Percent)

	2013-2015	2015-2017	Difference
Consumption	3.81	2.62	-1.19**
Income	5.98	9.99	4.01***

(B) Household Consumption and Income Growth Rate by Age (Percent)

	Consumption			Income		
	2013-2015	2015-2017	Difference	2013-2015	2015-2017	Difference
Age < 30	3.90	2.91	-0.99	9.40	10.86	1.46
30 ≤ Age < 50	4.58	2.04	-2.54***	8.28	10.45	2.17**
Age ≥ 50	3.00	3.03	0.02	3.20	9.59	6.40***

(C) Changes in Household Consumption and Income Growth Rate (percent) by Age and Education

	Consumption		Income	
	Low Edu	High Edu	Low Edu	High Edu
Age < 30	-1.08	-0.96	6.90	-2.35
30 ≤ Age < 50	-2.18**	-3.68***	1.04	5.11***
Age ≥ 50	-0.19	1.20	6.47***	7.45***

Note: The table reports the growth rates of consumption and income. Panel c reports the changes in annualized household consumption and income growth rates between 2015-2017 and 2013-2015 episodes. The data source is China Household Finance Survey. The numbers reported in this table are annualized growth rates. Significance: \*  $p < 0.1$ , \*\*  $p < 0.05$ , \*\*\*  $p < 0.01$ .

TABLE 7. Household Consumption Growth Rate: Renter

(A) Average Household Consumption and Income Growth Rate (Percent)

	2013-2015	2015-2017	Difference
Consumption	5.11	8.23	3.12**
Income	10.24	13.67	3.43*

(B) Household Consumption and Income Growth Rate by Age (Percent)

	Consumption			Income		
	2013-2015	2015-2017	Difference	2013-2015	2015-2017	Difference
Age < 30	7.12	15.01	7.89**	12.08	18.15	6.07
30 ≤ Age < 50	5.16	9.26	4.10*	12.62	16.46	3.84
Age ≥ 50	4.26	5.77	1.51	7.13	10.31	3.18

(C) Changes in Household Consumption and Income Growth Rate (percent) by Age and Education

	Consumption		Income	
	Low Edu	High Edu	Low Edu	High Edu
Age < 30	13.30*	5.38	3.20	9.59
30 ≤ Age < 50	5.91**	-2.29	3.88	5.53
Age ≥ 50	1.44	3.45	3.02	7.75

Note: The table reports the growth rates of consumption and income. Panel c reports the changes in annualized household consumption and income growth rates between 2015-2017 and 2013-2015 episodes. The data source is China Household Finance Survey. The numbers reported in this table are annualized growth rates. Significance: \*  $p < 0.1$ , \*\*  $p < 0.05$ , \*\*\*  $p < 0.01$ .



TABLE 8. The Effects of Mortgage Debt on Consumption Growth

Consumption Growth Rate	(1)	(2)
Mortgage debt dummy	-5.31***	
Mortgage debt to income ratio		-0.55**
Income growth rate	0.13***	0.18***
Controls	Y	Y
City-Time Fixed Effects	Y	Y
N	28457	2739
$R^2$	0.07	0.17

Notes: The table reports the regression results of mortgage debt on consumption growth rate. Controls for both regressions include age, age squared, education dummies, and family size growth rate. The data source is China Household Finance Survey. Significance: \*  $p < 0.1$ , \*\*  $p < 0.05$ , \*\*\*  $p < 0.01$ .

TABLE 9. Parameter Values

Parameter	Interpretation	Value
<b>Demographics</b>		
$J^{ret}$	Retirement age (years)	36
$J$	Length of life (years)	57
$\nu$	High labor-ability household share	0.5
<b>Preferences</b>		
$1/\gamma$	Elasticity of substitution	1.25
$\sigma$	Risk aversion	2.00
$\beta$	Discount factor	0.96
$\phi_L$	Housing preference L	0.20
$\phi_H$	Housing preference H	0.30
$\Pi_{lh}$	Prob: $\phi_L$ to $\phi_H$	0.4
$\omega$	Utility discount from renting	0.70
$\varphi$	Strength of bequest motive	150
$\underline{b}$	Extent of bequest as luxury	2.75
<b>Endowments</b>		
$\varepsilon_j$	Life-cycle profile	He, Ning and Zhu (2017)
$\rho_\epsilon$	Income correlation	İmrohoroğlu and Zhao (2018)
$\sigma_\epsilon$	Std of income shocks	İmrohoroğlu and Zhao (2018)
$\eta_H$	High labor ability	Cooper and Zhu (2018)
$\xi$	Replacement rate	0.5
<b>Housing</b>		
$\mathcal{H}$	Owner housing grid	{0.7, 2, 2.6, 4.75}
$\tilde{\mathcal{H}}$	Renter housing grid	{0.35, 0.7, 2, 2.6}
$\hat{h}$	2nd house cutoff	2.60
$\kappa_h$	Housing sale transaction cost	0.03
$\delta_h$	Housing depreciation rate	0.02
$\psi$	Rent company operation cost	0.035
$\alpha/(1 - \alpha)$	Housing supply elasticity	4.0
$\bar{L}$	Land endowment	0.19
<b>Financial Instruments</b>		
$r_b$	Interest rate	0.03
$r_m$	Mortgage rate	0.049
$\kappa_m$	mortgage origination cost	0.035

Note: The table reports parameter values. The model period is two-years. All values for which the time period is relevant are reported here annualized.

TABLE 10. Targeted Moments in the Calibration

Moments	Data	Model
Homeownership rate	0.86	0.88
Homeownership rate under 30	0.67	0.65
Owner over renter income ratio	2.87	3.23
2nd house mortgage amount share	0.05	0.06
2nd house mortgage number share	0.05	0.08
2nd house homeownership rate	0.15	0.13
Aggregate wealth to income ratio	9.20	8.52
Outstanding mortgage to income ratio	3.38	3.94
Purchased house value to income ratio	7.30	10.59
Net worth ratio of 75 to 55: low income	0.76	0.76
Net worth ratio of 75 to 55: high income	0.85	0.86
housing wealth to net wealth ratio: p10	0.56	0.75
housing wealth to net wealth ratio: p50	0.88	0.99
housing wealth to net wealth ratio: p90	0.98	1.00

Note: The table reports targeted moments. The empirical moments for 2nd house mortgage amount share, 2nd house mortgage number share, and purchased house value to income ratio are calculated from the bank's loan-level mortgage origination data, and other moments are calculated from China Household Finance Survey.

TABLE 11. Cross-sectional Moments

Moments	Data	Model
Net wealth Gini coefficient	0.59	0.49
Net housing wealth Gini coefficient	0.56	0.51
Net wealth share: bottom quintile	0.01	0.03
Net wealth share: middle quintile	0.11	0.14
Net wealth share: top quintile	0.62	0.54
Housing wealth to income for owners: p10	2.27	4.03
Housing wealth to income for owners: p50	9.75	8.87
Housing wealth to income for owners: p90	42.05	14.97

Note: The table reports cross-sectional moments. The empirical moments are calculated from China Household Finance Survey.

TABLE 12. Benchmark Policy Experiment: increase in maximum LTV ratio for 2nd houses

(A) Aggregate Impacts on Housing Prices, Mortgage and Consumption

	Model	Data
House price	2.36%	4.98%
Mortgage amount	28.55%	30.38%
Mortgage number	16.82%	17.13%
Mortgage amount (1st house)	26.41%	27.28%
Mortgage number (1st house)	15.11%	15.59%
Consumption	-0.28%	-0.89%

(B) Changes in Mortgage Share and Consumption by Age and Education

	Share Change				Growth Rate	
	Mortgage Amount		Mortgage Number		Consumption	
	L Edu	H Edu	L Edu	H Edu	L Edu	H Edu
Young	-0.39%	-3.97%	-1.10%	-5.27%	-11.85%	3.59%
Middle-aged	-0.47%	<b>9.90%</b>	0.64%	<b>9.80%</b>	0.40%	<b>-1.18%</b>
Old	-1.00%	-4.06%	-1.69%	-2.38%	0.82%	1.46%

(C) Changes in Mortgage Share for 1st Houses by Age and Education

	Share Change			
	Mortgage Amount		Mortgage Number	
	L Edu	H Edu	L Edu	H Edu
Young	-0.08%	-2.78%	-0.79%	-4.88%
Middle-aged	-1.96%	<b>13.23%</b>	0.14%	<b>10.84%</b>
Old	-3.50%	-4.93%	-2.59%	-2.72%

Note: The table (A) reports simulated results for the aggregate impacts of relaxation of LTV policy for the secondary house. The number reported are annualized percentage changes of respective variables. The table (B) reports simulated results for mortgage share change and consumption growth rate. The table (C) reports simulated results for mortgage share change for 1st house.

TABLE 13. Policy Experiment with Constant Housing Prices: increase in maximum LTV ratio for 2nd houses

(A) Aggregate Impacts on Housing Prices, Mortgage and Consumption

	Counterfactual	Benchmark	Data
House price	0.00%	2.36%	4.98%
Mortgage amount	17.00%	28.55%	30.38%
Mortgage number	6.57%	16.82%	17.13%
Mortgage amount (1st house)	-2.24%	26.41%	27.28%
Mortgage number (1st house)	-2.24%	15.11%	15.59%
Consumption	-0.17%	-0.28%	-0.89%

(B) Changes in Mortgage Share and Consumption by Age and Education

	Share Change				Growth Rate	
	Mortgage Amount		Mortgage Number		Consumption	
	L Edu	H Edu	L Edu	H Edu	L Edu	H Edu
Young	-1.91%	-1.69%	-1.33%	-0.81%	-0.05%	-0.05%
Middle-aged	-1.04%	3.08%	-0.08%	1.75%	0.32%	-0.72%
Old	-0.06%	1.61%	-0.67%	1.14%	0.15%	-0.54%

(c) Changes in Mortgage Share for 1st Houses by Age and Education

	Share Change			
	Mortgage Amount		Mortgage Number	
	L Edu	H Edu	L Edu	H Edu
Young	0.35%	0.66%	0.37%	0.52%
Middle-aged	0.24%	-0.71%	0.15%	-0.68%
Old	-0.76%	0.23%	-0.44%	0.08%

Note: The table (A) reports simulated results for the aggregate impacts of relaxation of LTV policy for the secondary house. The number reported are annualized percentage changes of respective variables. The table (B) reports simulated results for mortgage share change and consumption growth rate. The table (C) reports simulated results for mortgage share change for 1st house.

TABLE 14. The Contribution of Churning-Up to the Housing Boom

(A) The Contribution of Churning-up to Increase in Mortgage and Housing: (Percent)

	Mortgage Amount	Mortgage Number	Housing Demand
1st House	65.28%	95.94%	70.48%

(B) The Contribution of Churning-up (1st H) by Age-Education: (Percent)

	Mortgage Amount		Mortgage Number		Housing Demand	
	L Edu	H Edu	L Edu	H Edu	L Edu	H Edu
Young	4.72%	6.89%	7.40%	11.38%	5.08%	7.40%
Middle-Aged	9.84%	31.79%	16.07%	43.48%	10.57%	34.42%
Old	5.88%	6.17%	9.07%	8.55%	6.33%	6.68%

Note: The table (A) reports the contribution of the increase in churning-up to the increase in aggregate mortgage and housing demand. The table (B) decomposes the contribution of the increase in churning-up by age and education.

TABLE 15. Counterfactual Experiments Results

(A) Changes in Mortgage Share and Consumption by Age and Education:  $\lambda_1$  increases

	Share Change				Growth Rate	
	Mortgage Amount		Mortgage Number		Consumption	
	L Edu	H Edu	L Edu	H Edu	L Edu	H Edu
Young	-2.09%	-2.18%	-5.82%	-3.18%	-5.21%	-0.40%
Middle-aged	7.45%	2.14%	9.34%	4.46%	1.92%	1.81%
Old	3.57%	-8.90%	0.82%	-5.62%	-0.08%	2.56%

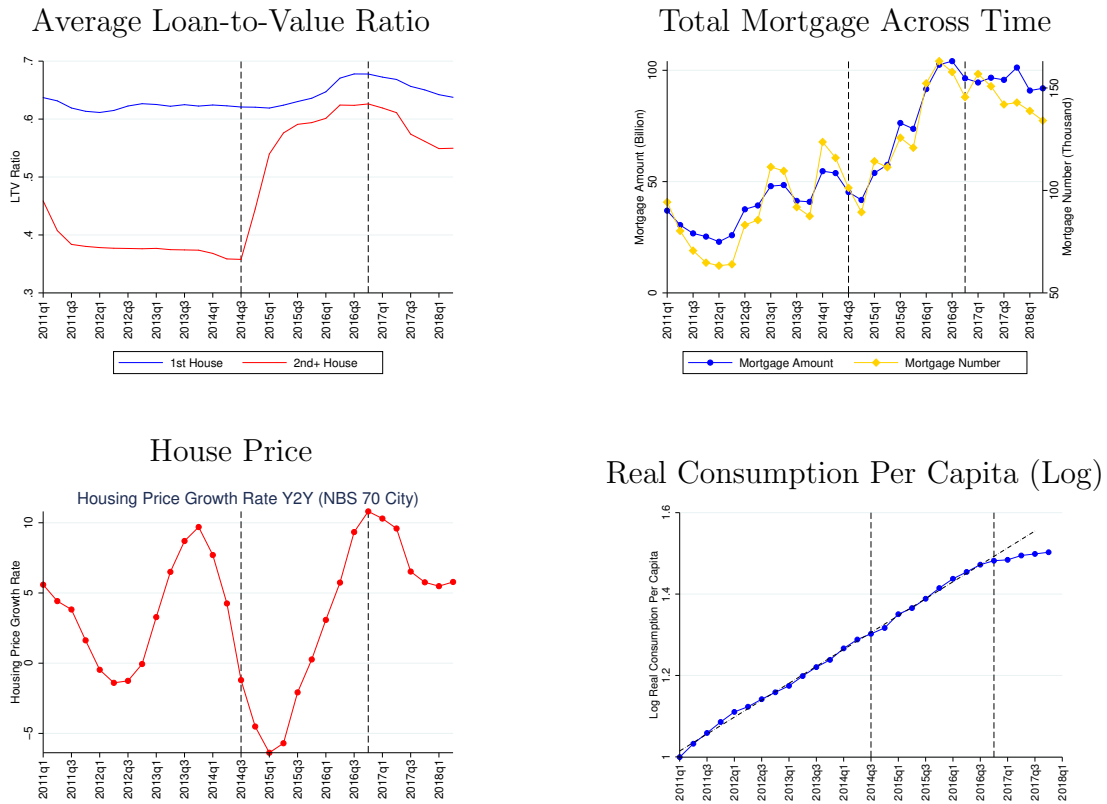
(B) Changes in Mortgage Share and Consumption by Age and Education: Interest rate cuts

	Share Change				Growth Rate	
	Mortgage Amount		Mortgage Number		Consumption	
	L Edu	H Edu	L Edu	H Edu	L Edu	H Edu
Young	1.19%	-0.44%	1.00%	0.09%	3.40%	3.12%
Middle-aged	0.01%	0.25%	0.24%	-0.39%	9.85%	3.86%
Old	-0.72%	-0.28%	-0.58%	-0.36%	5.09%	3.67%

Note: The table (A) reports numerical simulation results for the distributional impacts of decrease in maximum LTV ratio of the primary house. The table (B) reports numerical simulation results for the distributional impacts of decrease in interest rate. The number reported in the last two columns are annualized percentage changes of consumption.

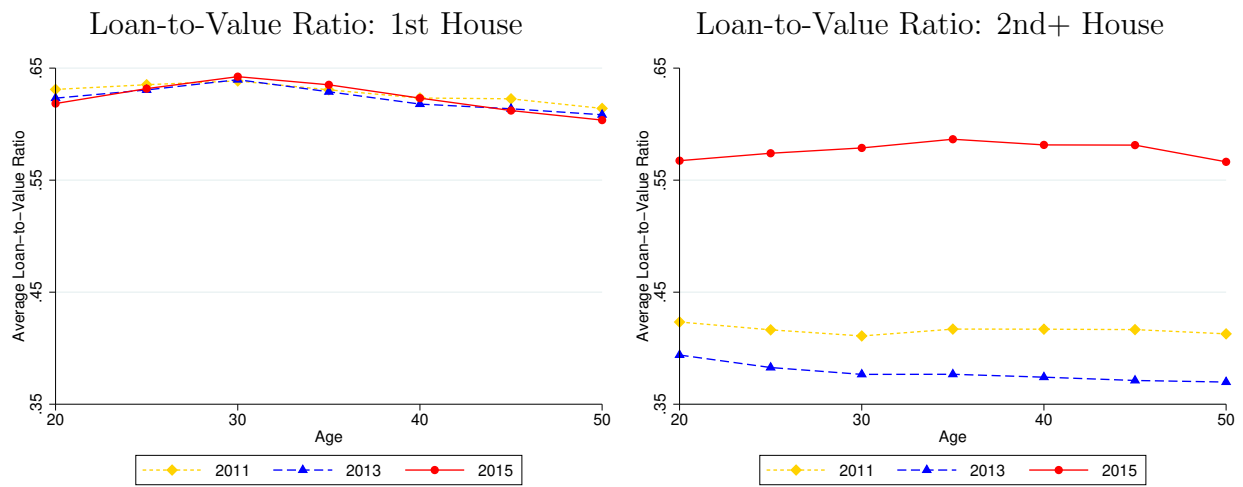


FIGURE 1. Time series of Aggregate Variables



Note: The top left panel plots the LTV ratios for primary and non-primary houses across time. The top right panel plots the mortgage origination amount and number. The bottom left panel plots the house price year-to-year growth rate. The bottom right panel plots the logarithm of real consumption per capita (the value in 2011Q1 normalized to be one). The LTV ratio and mortgage origination are calculated from the bank’s mortgage origination loan-level data. The house price is from the National Bureau of Statistics of China. The consumption data is from China’s macroeconomy time series data from Center for Quantitative Economic Research in the Federal Reserve Bank of Atlanta.

FIGURE 2. Loan to Value Ratio at Origination



Note: The left panel plots the average LTV ratios for the primary houses in 2011, 2013 and 2015 across ages. The right panel plots the average LTV ratios for the non-primary houses in 2011, 2013 and 2015 across ages. The average LTV ratio is computed for each of a five-year age bin (e.g. 23-27, 28-32). The data is from the bank’s mortgage origination loan-level data.

FIGURE 3. Loan-to-Value Ratio Distribution along Time

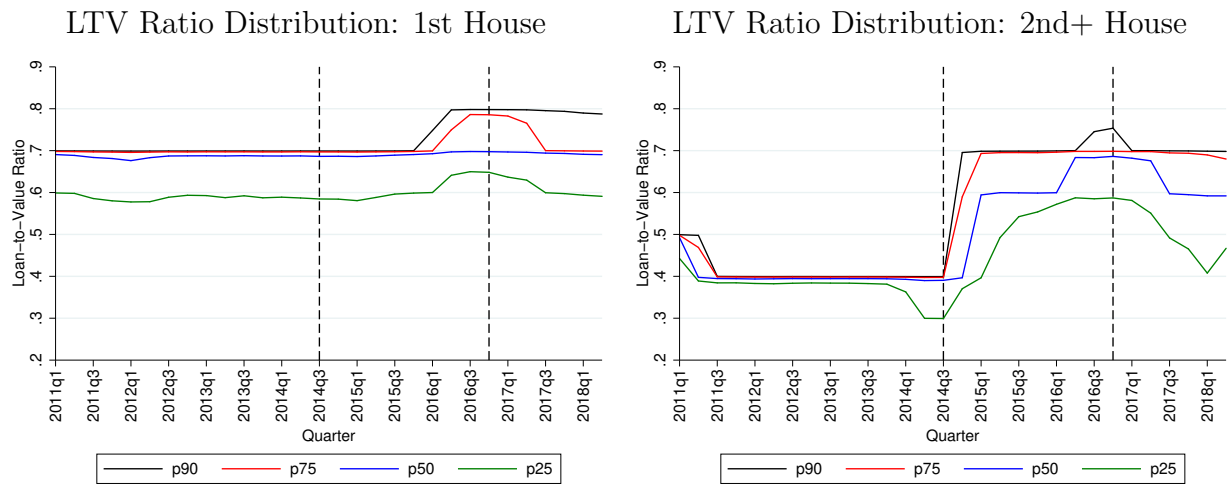
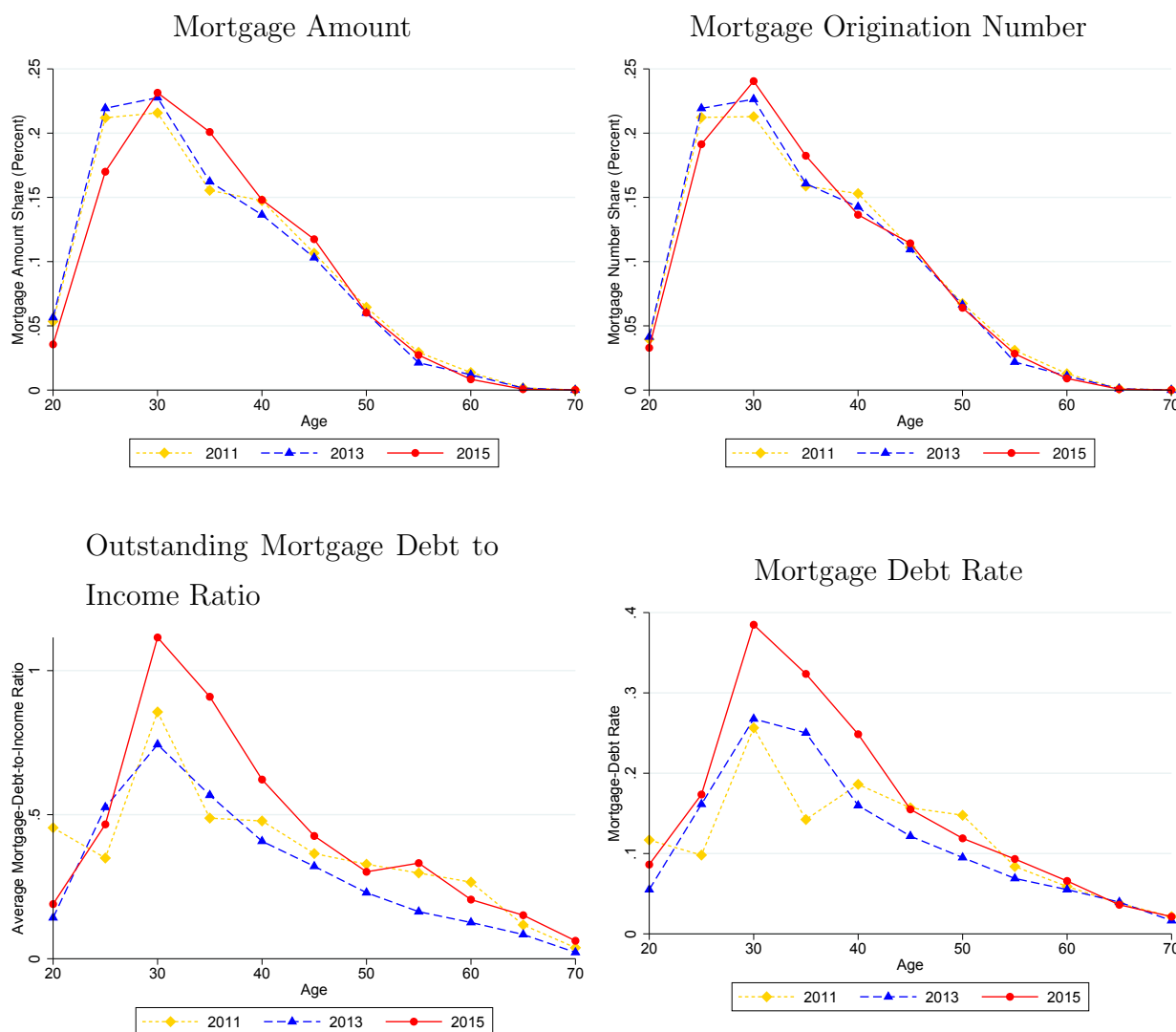


FIGURE 4. Mortgage, Mortgage Debt, and House Value



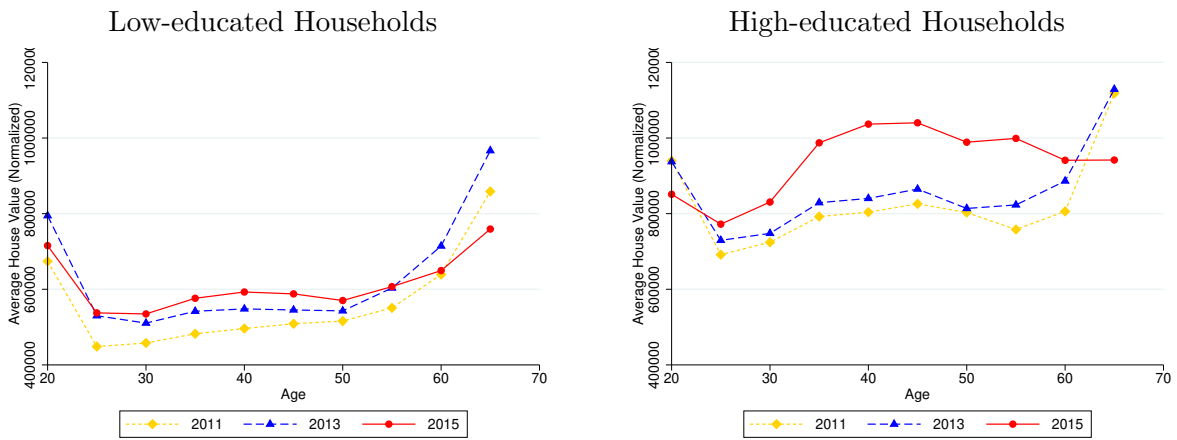
Note: The top left panel plots the mortgage origination amount for all and the first houses across time. The top right panel plots the mortgage origination number for all and the first houses across time. The bottom left panel plots the average mortgage debt at origination to income ratio for all and the first houses across time. The bottom right panel plots the average house value to income ratio for all and the first houses across time. The data is from the bank’s mortgage origination loan-level data.

FIGURE 5. Mortgage Shares across Age Groups



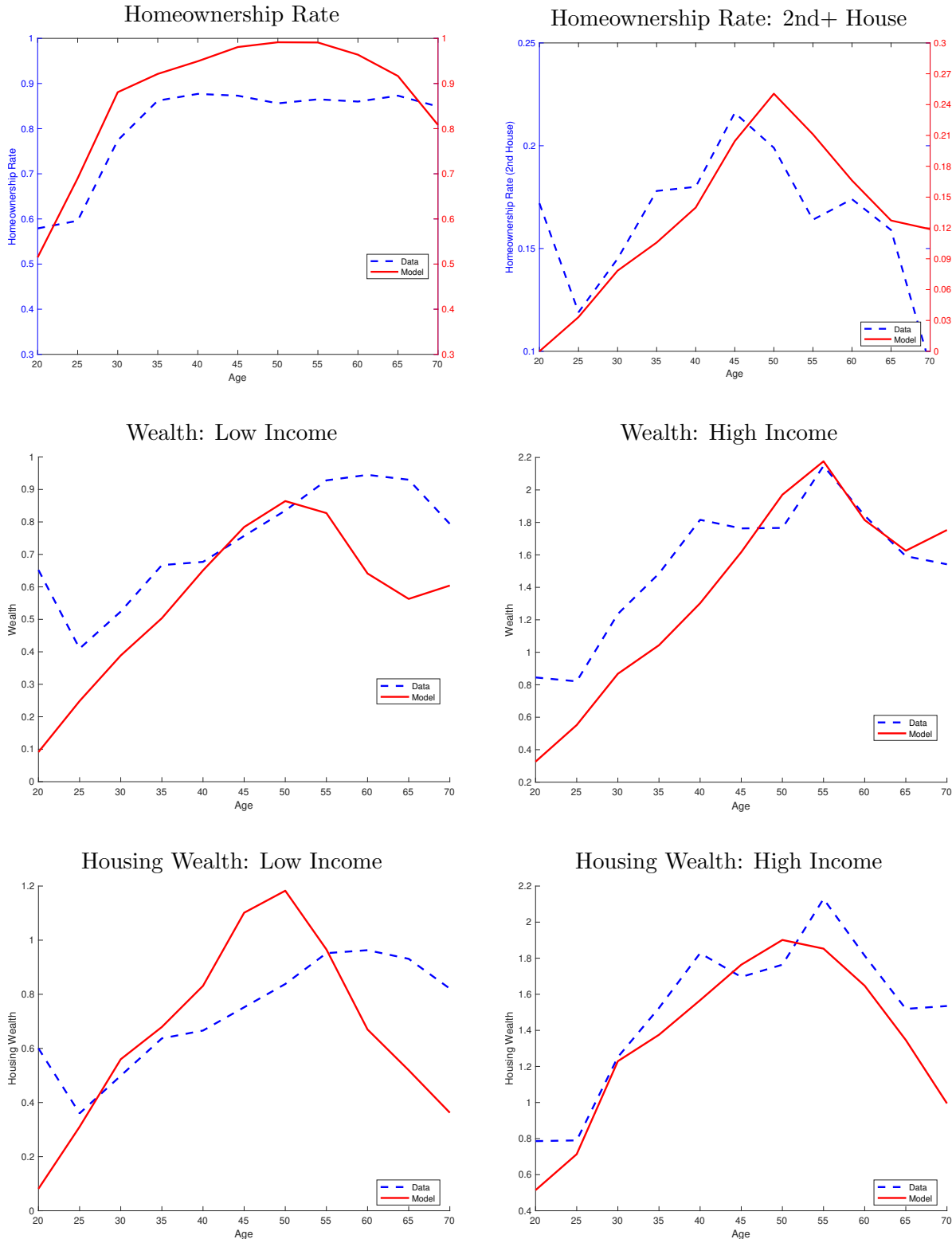
Note: The top left panel plots the mortgage origination amount share in 2011, 2013 and 2015 across ages. The top right panel plots the mortgage origination number share in 2011, 2013 and 2015 across ages. The data is calculated from the bank's mortgage origination loan-level data. The bottom left panel plots the average outstanding mortgage debt to income ratio in 2011, 2013 and 2015 across ages. The bottom right panel plots the average rate of household with positive mortgage debt in 2011, 2013 and 2015 across ages. The data is calculated from China Household Finance Survey.

FIGURE 6. Average Housing Value: 1st House



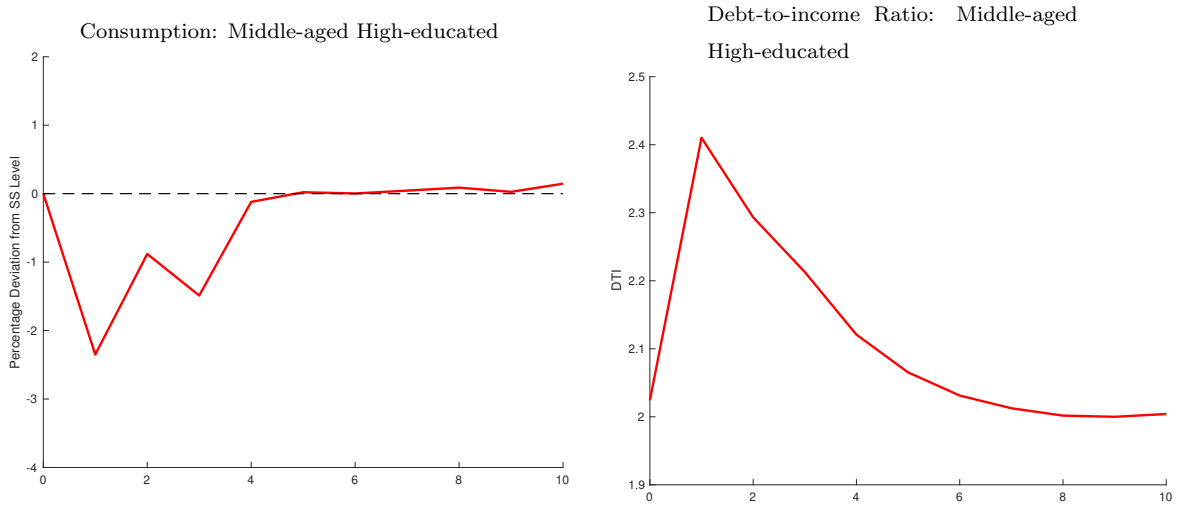
Note: The housing value for each household at a certain year is scaled by monthly NBS 70 city house price index in the city where the household is located in the month when the mortgage origination occurred.

FIGURE 7. Lifecycle Profiles of Homeownership Rate and Wealth



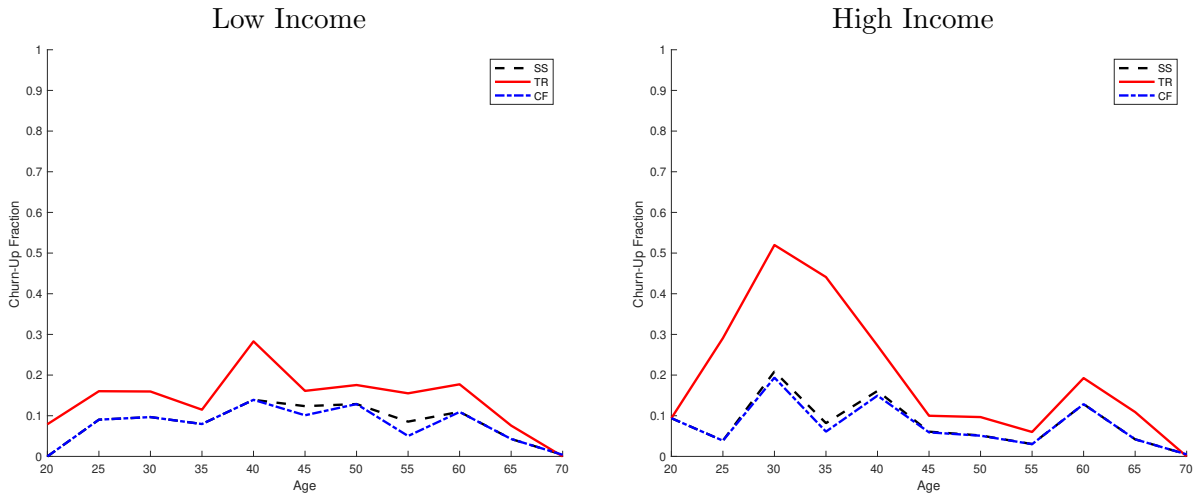
Note: The top panels plot the homeownership rate for all and the second houses across. The middle panels plot the net wealth (normalized by the average net wealth) for low and high income groups. The bottom panels plot the housing wealth (normalized by the average housing wealth) for low and high income groups. Empirical age profiles are calculated from China Household Finance Survey.

FIGURE 8. Long-run Impacts of LTV Policy Relaxation on Consumption



Note: The left panel plots the simulated transition path of non-housing consumption of middle-age high-educated households in response to a relaxation in LTV policy for the secondary houses under the benchmark experiment. The right panel plots the simulated average mortgage debt to income ratio of middle-age high educated households under the same policy experiment.

FIGURE 9. Age Profile of Housing Churn-Up Rate (1st House)



Note: The left (right) panel plots the age profile of churning-up rate of low (high)-income households for steady state, benchmark case and the counterfactual experiment with fixed prices.

## REFERENCES

- Adelino, Manuel, Antoinette Schoar, and Felipe Severino**, “Loan originations and defaults in the mortgage crisis: The role of the middle class,” *The Review of Financial Studies*, 2016, 29 (7), 1635–1670.
- , ———, and ———, “Dynamics of housing debt in the recent boom and great recession,” *NBER Macroeconomics Annual*, 2018, 32 (1), 265–311.
- Albanesi, Stefania, Giacomo De Giorgi, and Jaromir Nosal**, “Credit growth and the financial crisis: A new narrative,” Technical Report, National Bureau of Economic Research 2017.
- Beraja, Martin, Andreas Fuster, Erik Hurst, and Joseph Vavra**, “Regional heterogeneity and the refinancing channel of monetary policy,” *The Quarterly Journal of Economics*, 2018, 134 (1), 109–183.
- Berger, David, Veronica Guerrieri, Guido Lorenzoni, and Joseph Vavra**, “House prices and consumer spending,” *The Review of Economic Studies*, 2017, 85 (3), 1502–1542.
- Chen, Kaiji and Yi Wen**, “The great housing boom of China,” *American Economic Journal: Macroeconomics*, 2017, 9 (2), 73–114.
- Chen, Ting, Laura Liu, Wei Xiong, and Li-An Zhou**, “Real estate boom and misallocation of capital in China,” *Working Paper*, 2017.
- Cooper, Russell and Guozhong Zhu**, “Household finance in China,” *Working Paper*, 2018.
- Corbae, Dean and Erwan Quintin**, “Leverage and the foreclosure crisis,” *Journal of Political Economy*, 2015, 123 (1), 1–65.
- Fang, Hanming and Jin Feng**, “The Chinese Pension System,” *Working Paper*, 2018.
- , **Quanlin Gu, Wei Xiong, and Li-An Zhou**, “Demystifying the Chinese housing boom,” *NBER macroeconomics annual*, 2016, 30 (1), 105–166.
- Favilukis, Jack, Sydney C Ludvigson, and Stijn Van Nieuwerburgh**, “The macroeconomic effects of housing wealth, housing finance, and limited risk sharing in general equilibrium,” *Journal of Political Economy*, 2017, 125 (1), 140–223.
- Foote, Christopher L, Lara Loewenstein, and Paul S Willen**, “Cross-sectional patterns of mortgage debt during the housing boom: evidence and implications,” Technical Report, National Bureau of Economic Research 2016.
- Glover, Andrew, Jonathan Heathcote, Dirk Krueger, and José-Víctor Ríos-Rull**, “Intergenerational redistribution in the great recession,” *Working Paper*, 2011.



- Gu, Quanlin, Jia He, and Wenlan Qian**, “Housing Booms and Shirking,” *Working Paper*, 2018.
- Guren, Adam M, Alisdair McKay, Emi Nakamura, and Jón Steinsson**, “Housing wealth effects: The long view,” *Working Paper*, 2018.
- Han, Bing, Lu Han, and Guozhong Zhu**, “Housing price and fundamentals in a transition economy: The case of the Beijing market,” *International Economic Review*, 2018, 59 (3), 1653–1677.
- He, Hui, Lei Ning, and Dongming Zhu**, “The Impact of Rapid Aging and Pension Reform on Savings and the Labor Supply: The Case of China,” *Working Paper*, 2017.
- İmrohoroğlu, Ayşe and Kai Zhao**, “The Chinese saving rate: Long-term care risks, family insurance, and demographics,” *Journal of Monetary Economics*, 2018, 96, 33–52.
- Kaplan, Greg, Kurt Mitman, and Giovanni L Violante**, “The housing boom and bust: Model meets evidence,” *Working Paper*, 2017.
- Kiyotaki, Nobuhiro, Alexander Michaelides, and Kalin Nikolov**, “Winners and losers in housing markets,” *Journal of Money, Credit and Banking*, 2011, 43 (2-3), 255–296.
- Landvoigt, Tim, Monika Piazzesi, and Martin Schneider**, “The housing market (s) of San Diego,” *American Economic Review*, 2015, 105 (4), 1371–1407.
- Mian, Atif and Amir Sufi**, “The consequences of mortgage credit expansion: Evidence from the US mortgage default crisis,” *The Quarterly Journal of Economics*, 2009, 124 (4), 1449–1496.
- \_\_\_\_\_ and \_\_\_\_\_, “House prices, home equity-based borrowing, and the US household leverage crisis,” *American Economic Review*, 2011, 101 (5), 2132–56.
- \_\_\_\_\_, **Kamalesh Rao, and Amir Sufi**, “Household balance sheets, consumption, and the economic slump,” *The Quarterly Journal of Economics*, 2013, 128 (4), 1687–1726.
- Piazzesi, Monika, Martin Schneider, and Selale Tuzel**, “Housing, consumption and asset pricing,” *Journal of Financial Economics*, 2007, 83 (3), 531–569.
- Sommer, Kamila and Paul Sullivan**, “Implications of US tax policy for house prices, rents, and homeownership,” *American Economic Review*, 2018, 108 (2), 241–74.
- Wang, Songtao, Su Han Chan, and Bohua Xu**, “The estimation and determinants of the price elasticity of housing supply: Evidence from China,” *Journal of Real Estate Research*, 2012, 34 (3), 311–344.
- Wei, Shang-Jin, Xiaobo Zhang, and Yin Liu**, “Home ownership as status competition:

Some theory and evidence,” *Journal of Development Economics*, 2017, *127*, 169–186.

**Wong, Arlene**, “Population aging and the transmission of monetary policy to consumption,” *Working Paper*, 2016.

**Wu, Jing, Joseph Gyourko, and Yongheng Deng**, “Evaluating conditions in major Chinese housing markets,” *Regional Science and Urban Economics*, 2012, *42* (3), 531–543.

**Xie, Yu and Yongai Jin**, “Household wealth in China,” *Chinese sociological review*, 2015, *47* (3), 203–229.

**Zhao, Bo**, “Rational housing bubble,” *Economic Theory*, 2015, *60* (1), 141–201.

EMORY UNIVERSITY AND FEDERAL RESERVE BANK OF ATLANTA; SOUTHWEST UNIVERSITY OF FINANCE AND ECONOMICS; SOUTHWEST UNIVERSITY OF FINANCE AND ECONOMICS; FEDERAL RESERVE BANK OF ATLANTA, EMORY UNIVERSITY, AND NBER