

BEVERIDGEAN UNEMPLOYMENT GAP

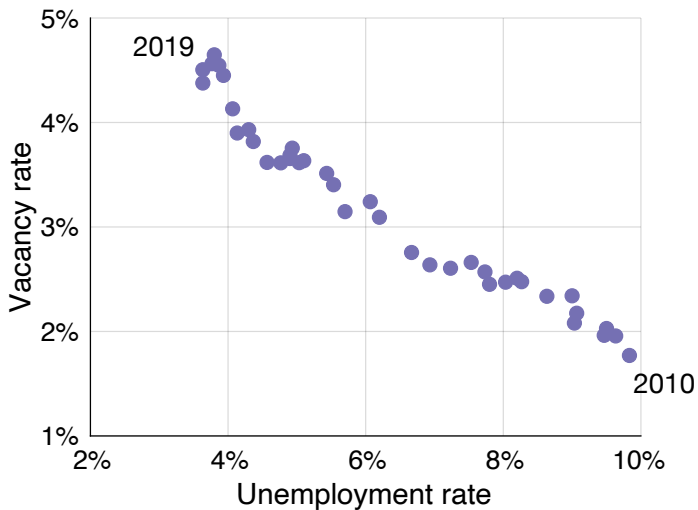
Pascal Michailat (Brown)

Emmanuel Saez (Berkeley)

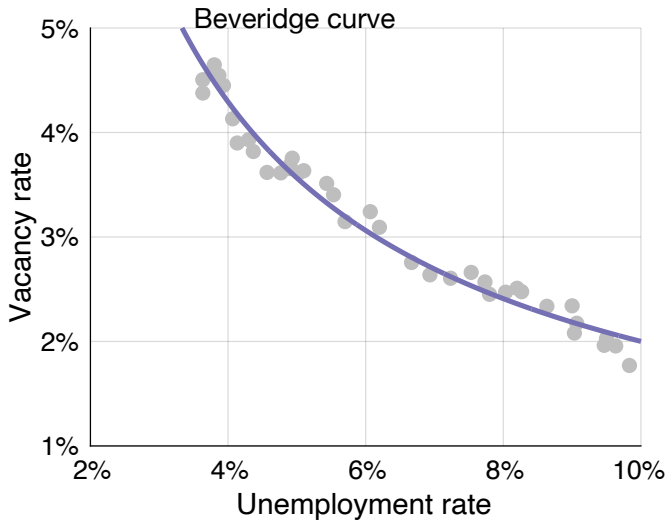
January 2021

Paper available at <https://www.pascalmichailat.org/9.html>

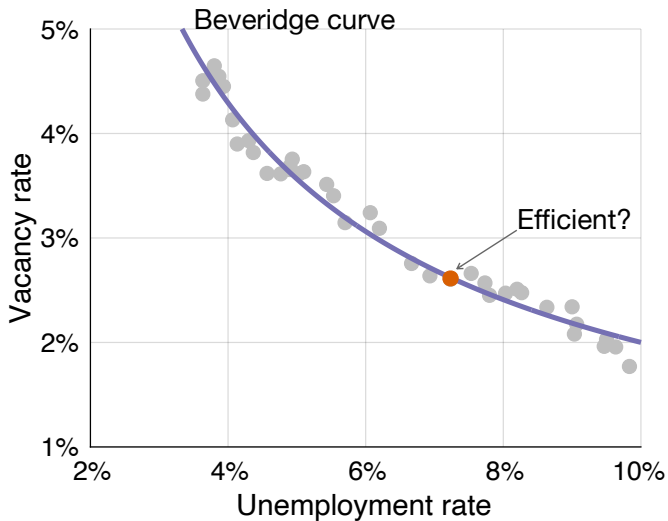
US BEVERIDGE CURVE



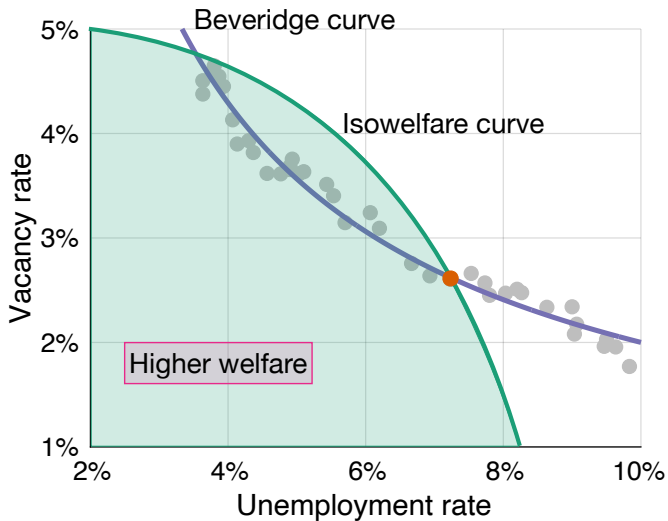
US BEVERIDGE CURVE



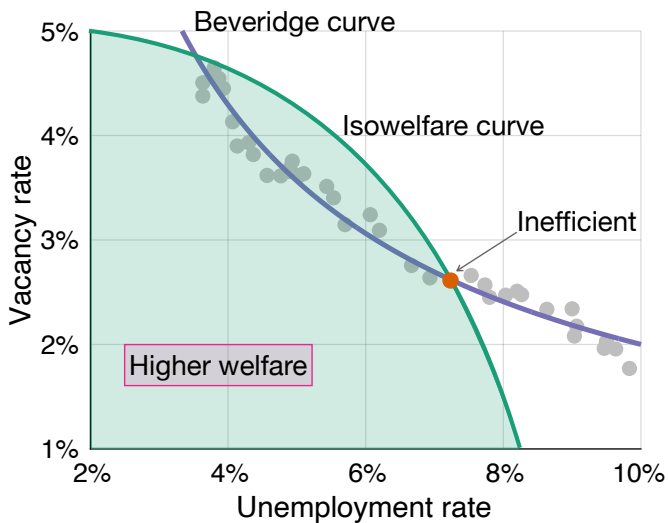
CONDITION FOR LABOR-MARKET EFFICIENCY



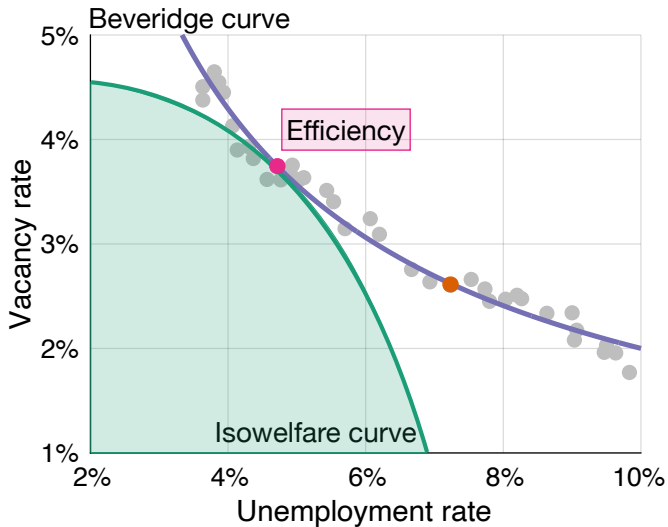
CONDITION FOR LABOR-MARKET EFFICIENCY



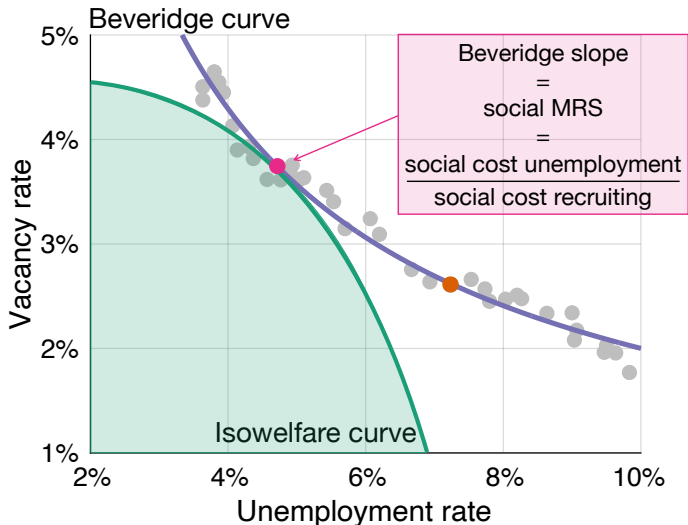
CONDITION FOR LABOR-MARKET EFFICIENCY



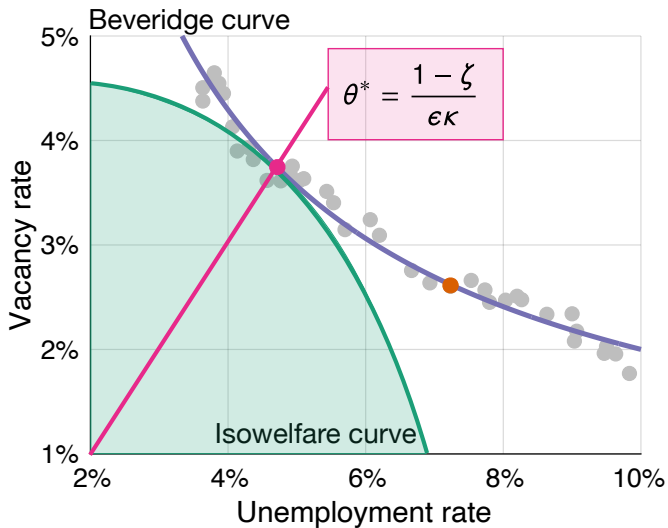
CONDITION FOR LABOR-MARKET EFFICIENCY



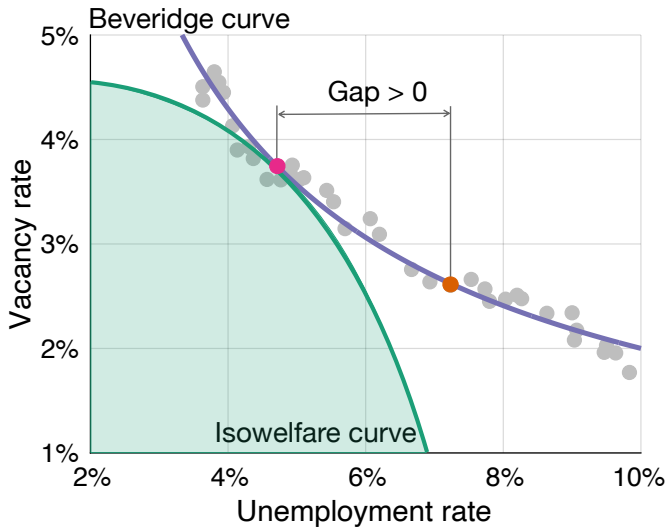
CONDITION FOR LABOR-MARKET EFFICIENCY



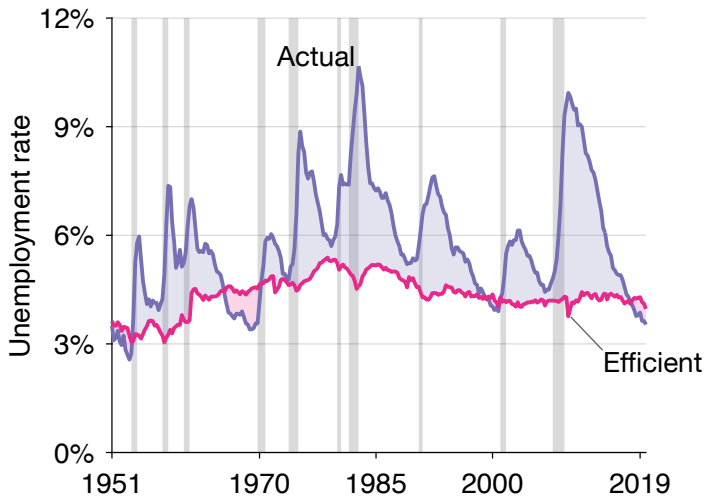
CONDITION FOR LABOR-MARKET EFFICIENCY



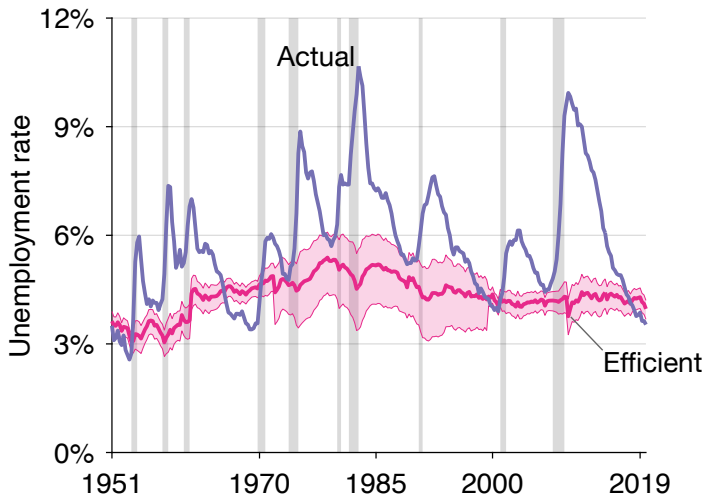
UNEMPLOYMENT GAP



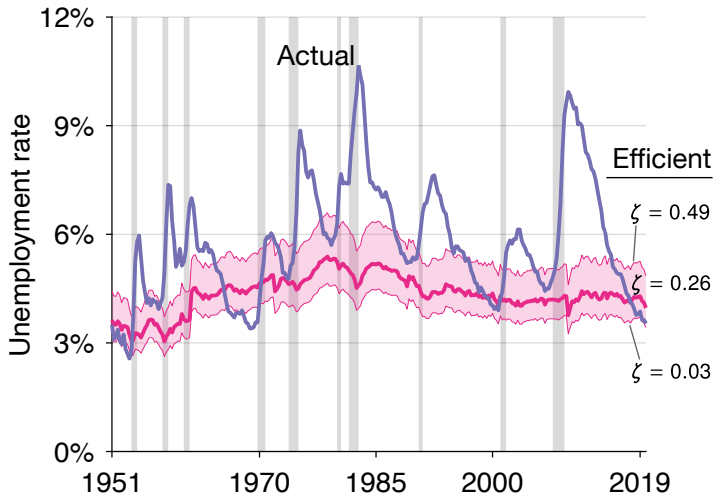
UNEMPLOYMENT GAP IN THE US



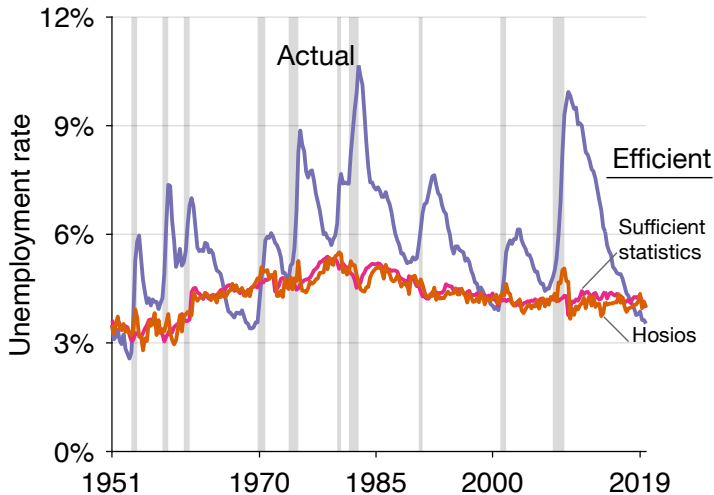
BEVERIDGE ELASTICITY IN 95% CI



PLAUSIBLE SOCIAL VALUES OF NONWORK



OUT-OF-BEVERIDGE DYNAMICS



PS: HAGEDORN-MANOVSKII COST OF UNEMPLOYMENT

