

Online Appendix to International Reserves and Rollover Risk

Javier Bianchi
Federal Reserve Bank of Minneapolis
and NBER

Juan Carlos Hatchondo
Indiana U.
and U. of Wisconsin

Leonardo Martinez

IMF

September 2017

B Data on Reserves, Debt and Spreads

We collect here all sources of the data used in the paper.

- Reserves are from the International Financial Statistics.

<http://dsbb.imf.org/images/pdfs/opguide.pdf>

- Debt data are from the World Economic Outlook Database for the 2000-2014 period (Figure 1) and from the IMF Fiscal Affairs Department Historical Public Debt Database for the 1980-2014 period (Figure 2)
- Spreads data is from the Emerging Markets Bond Index Plus (EMBI+ blended).
- GDP data is from World Economic Outlook Database

<http://www.imf.org/en/Publications/WEO/>

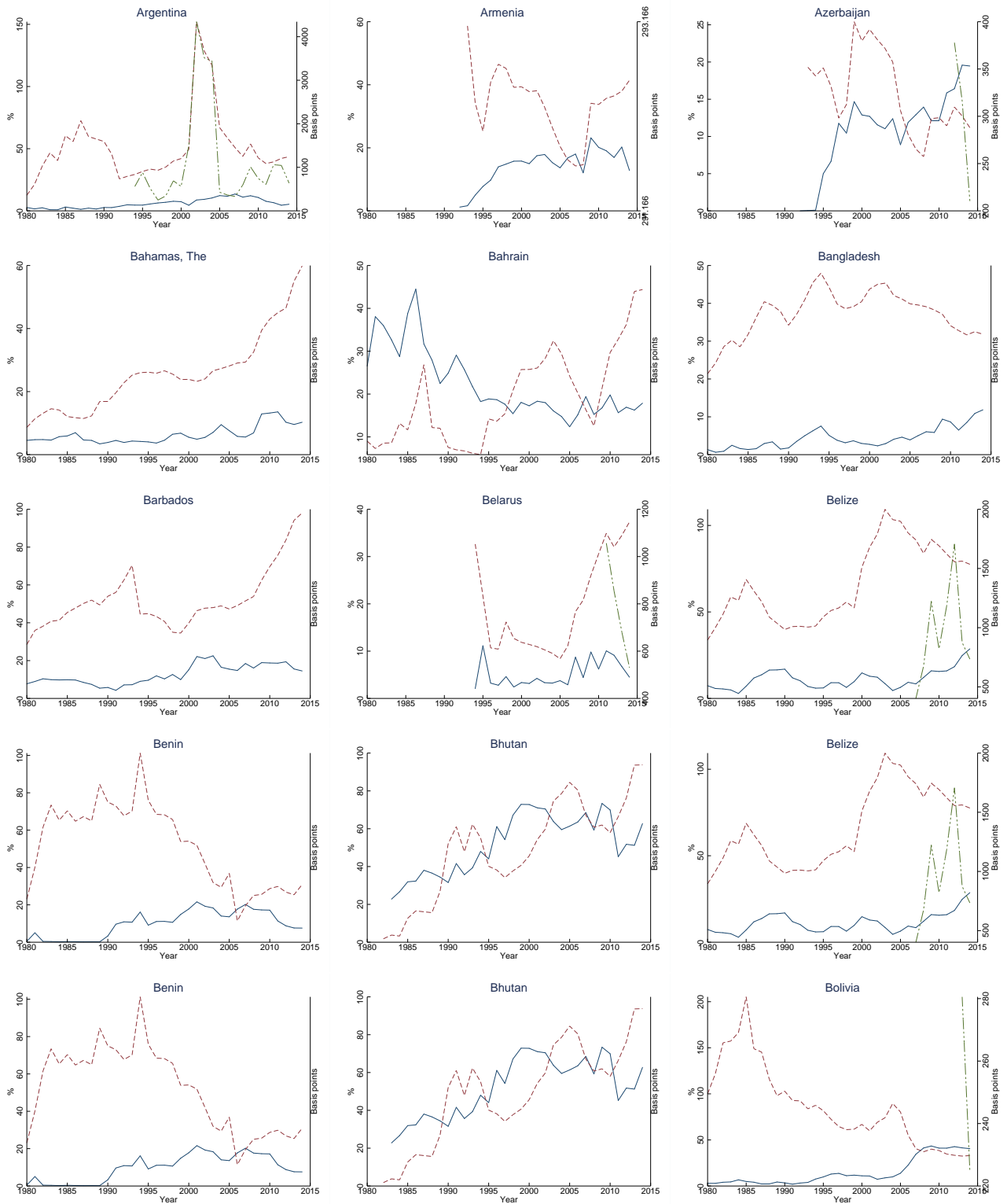


Figure 1: Sovereign spreads (dashed and dotted line; RHS), and international reserves (solid line) and public debt (dashed line) to GDP ratios.

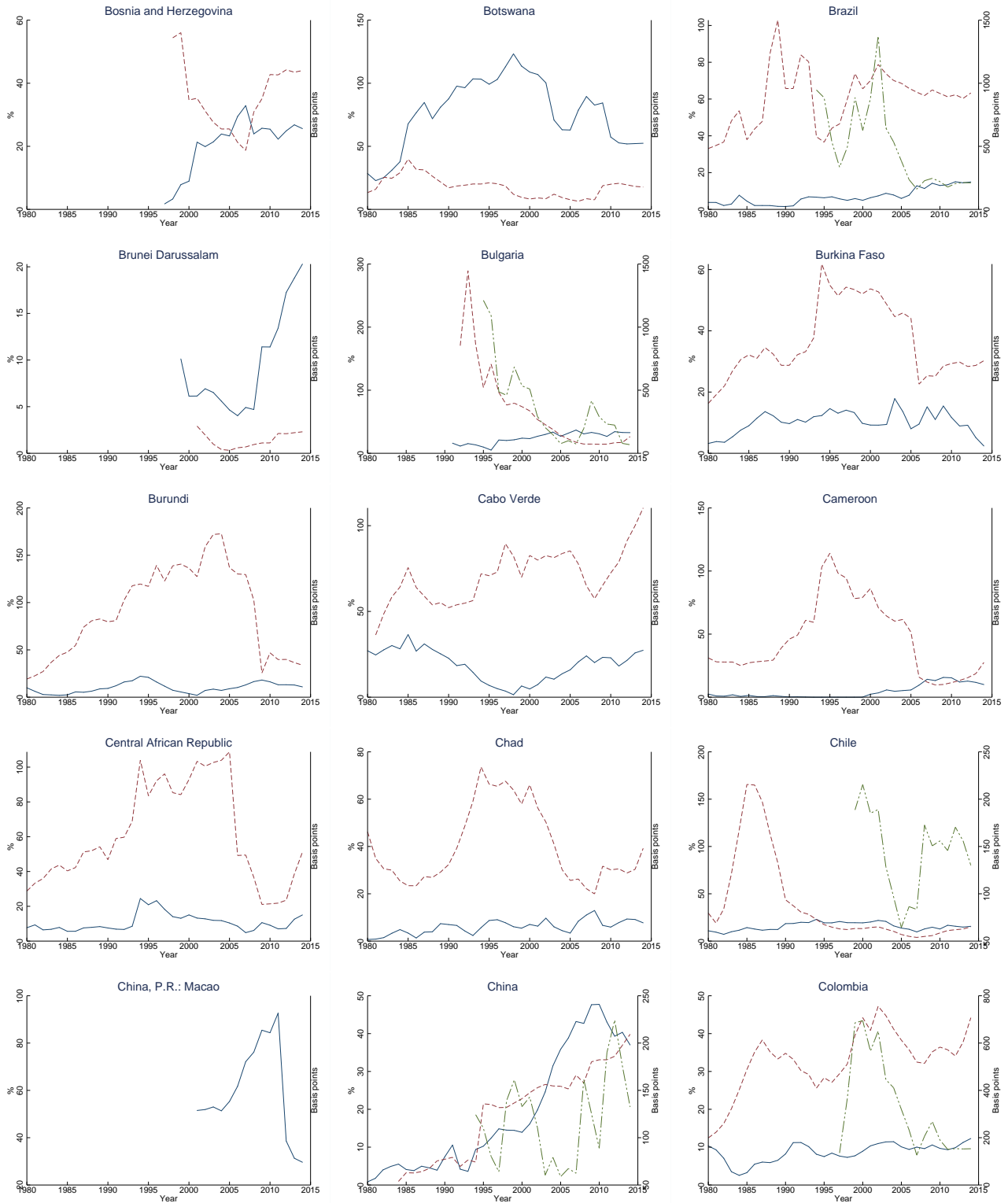


Figure 2: Sovereign spreads (dashed and dotted line; RHS), and international reserves (solid line) and public debt (dashed line) to GDP ratios.

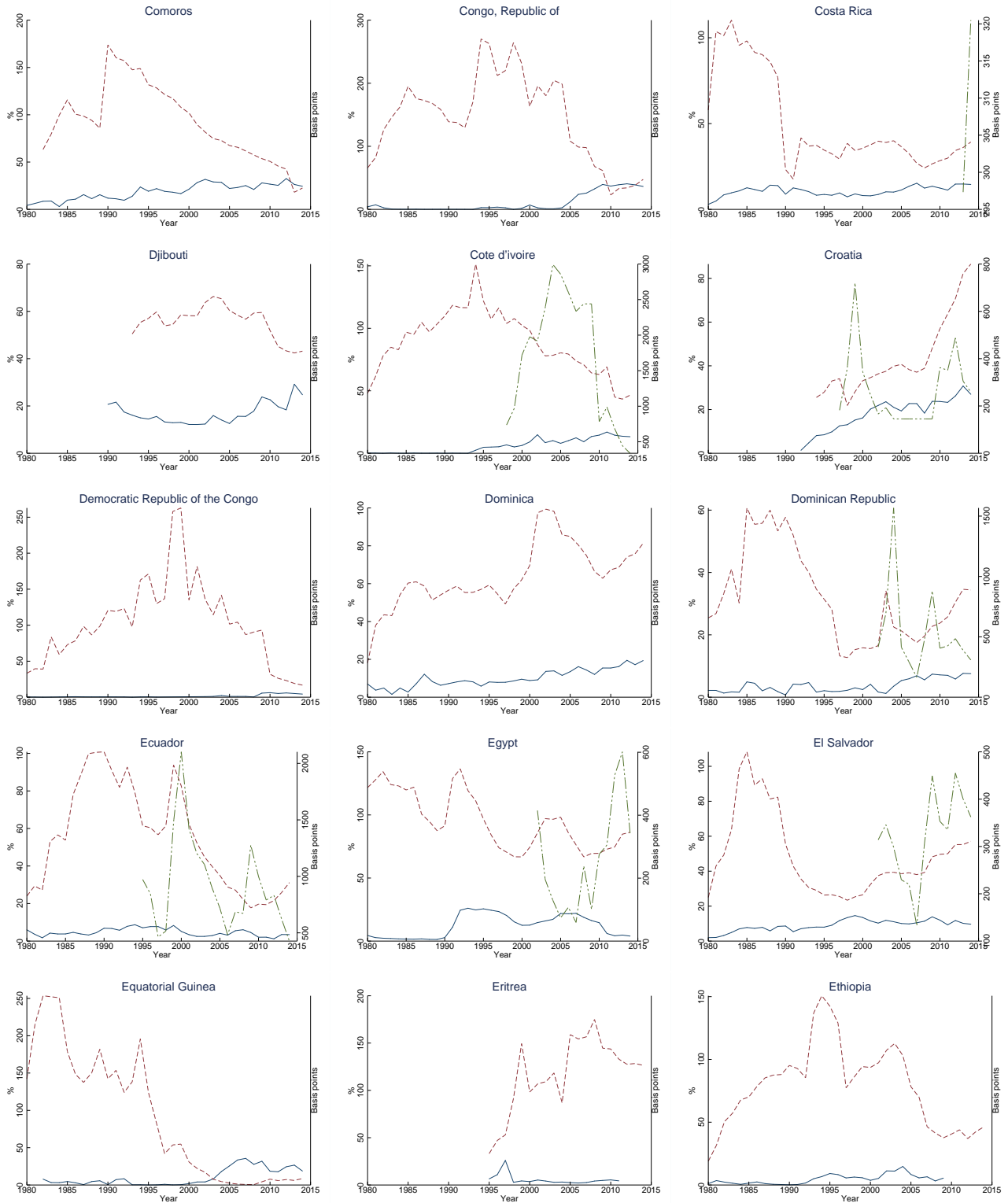


Figure 3: Sovereign spreads (dashed and dotted line; RHS), and international reserves (solid line) and public debt (dashed line) to GDP ratios.

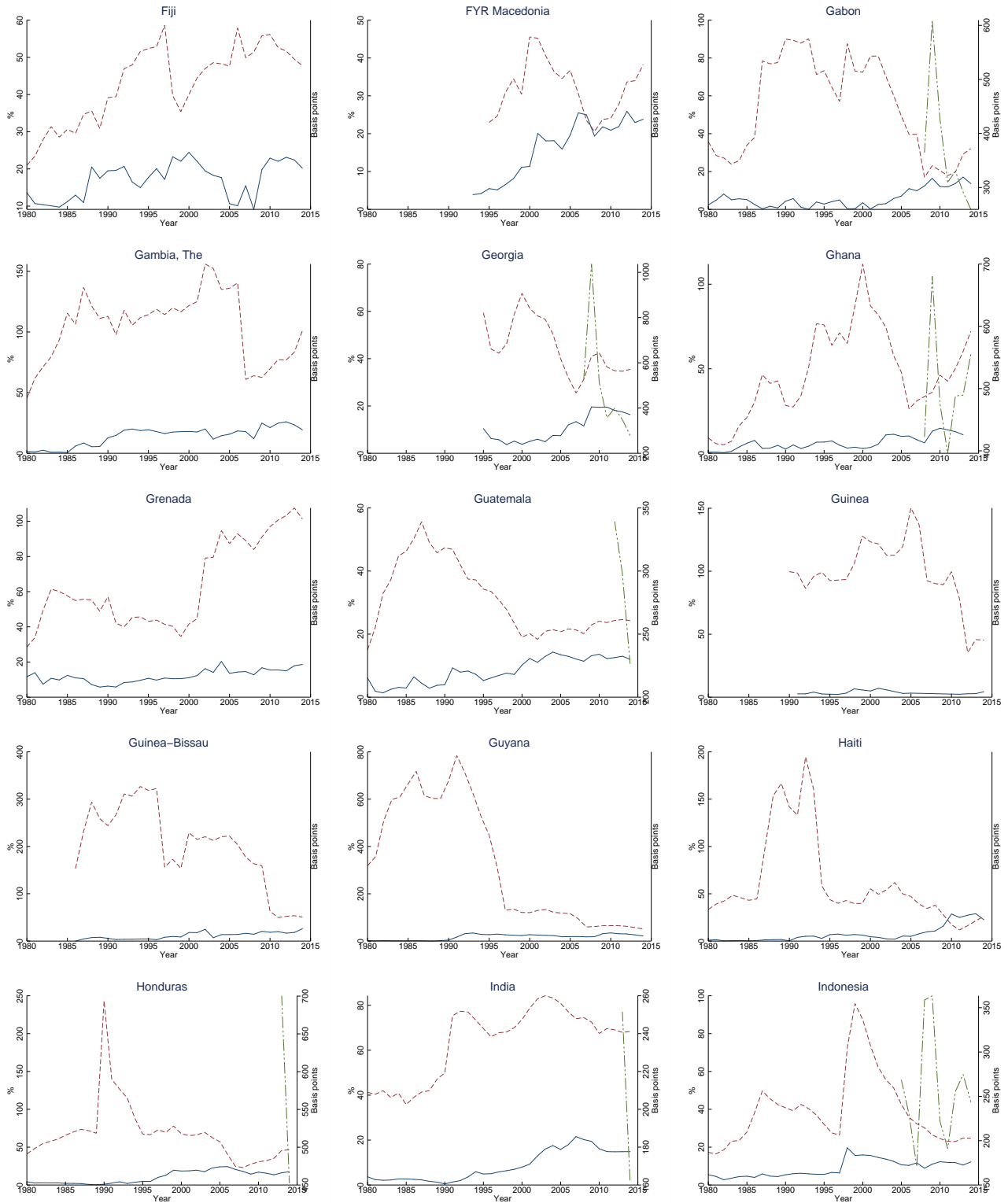


Figure 4: Sovereign spreads (dashed and dotted line; RHS), and international reserves (solid line) and public debt (dashed line) to GDP ratios.

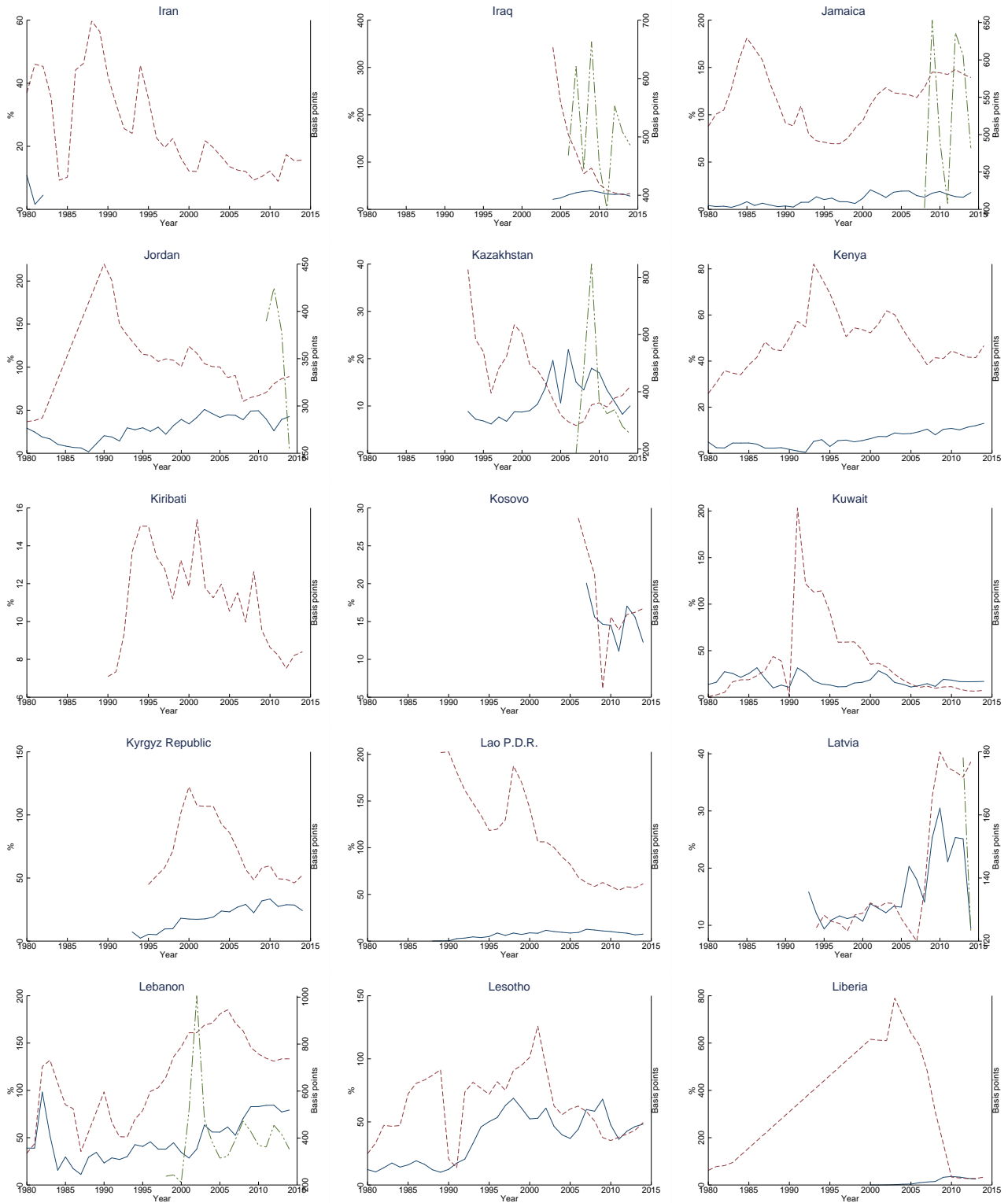


Figure 5: Sovereign spreads (dashed and dotted line; RHS), and international reserves (solid line) and public debt (dashed line) to GDP ratios.

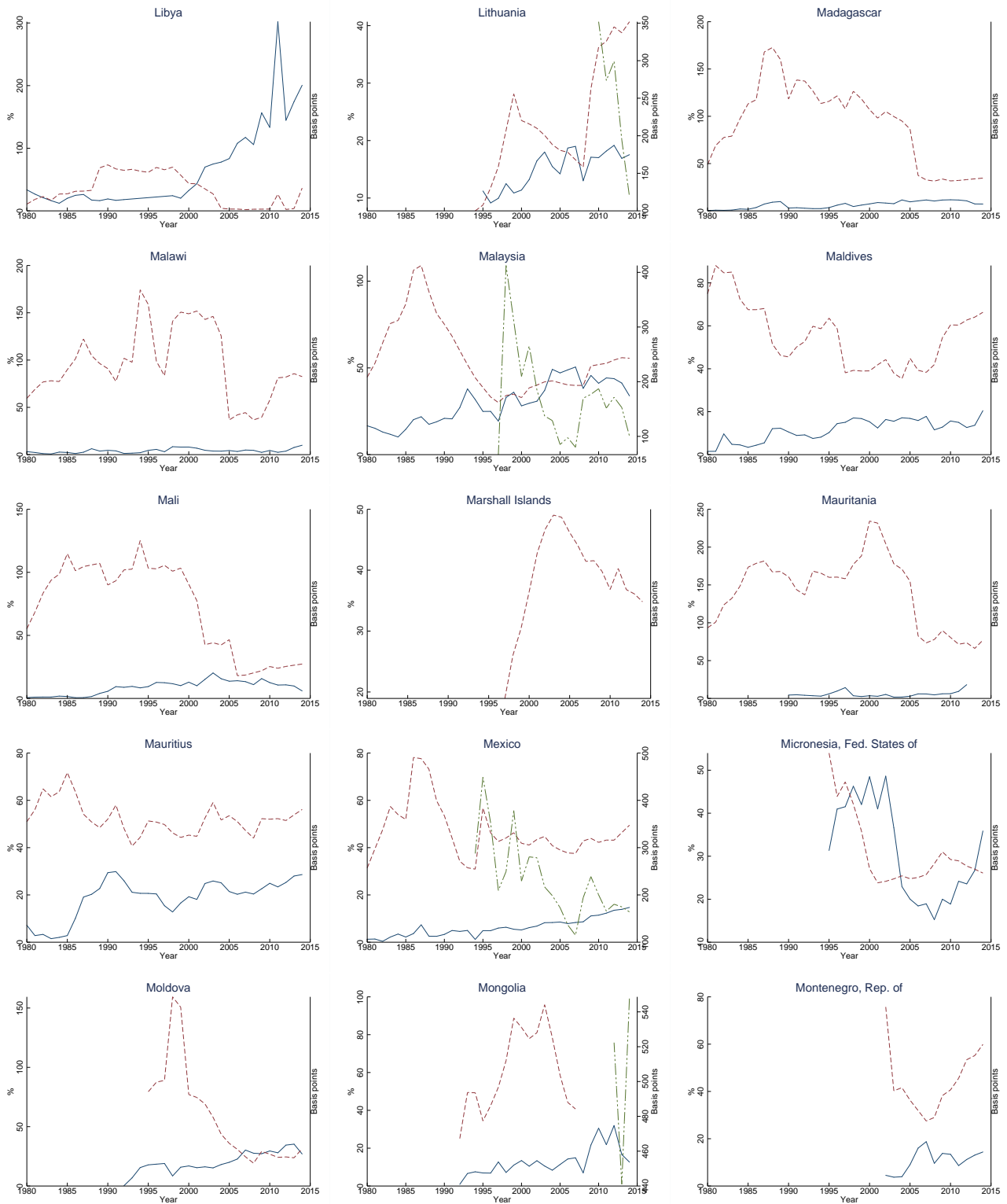


Figure 6: Sovereign spreads (dashed and dotted line; RHS), and international reserves (solid line) and public debt (dashed line) to GDP ratios.

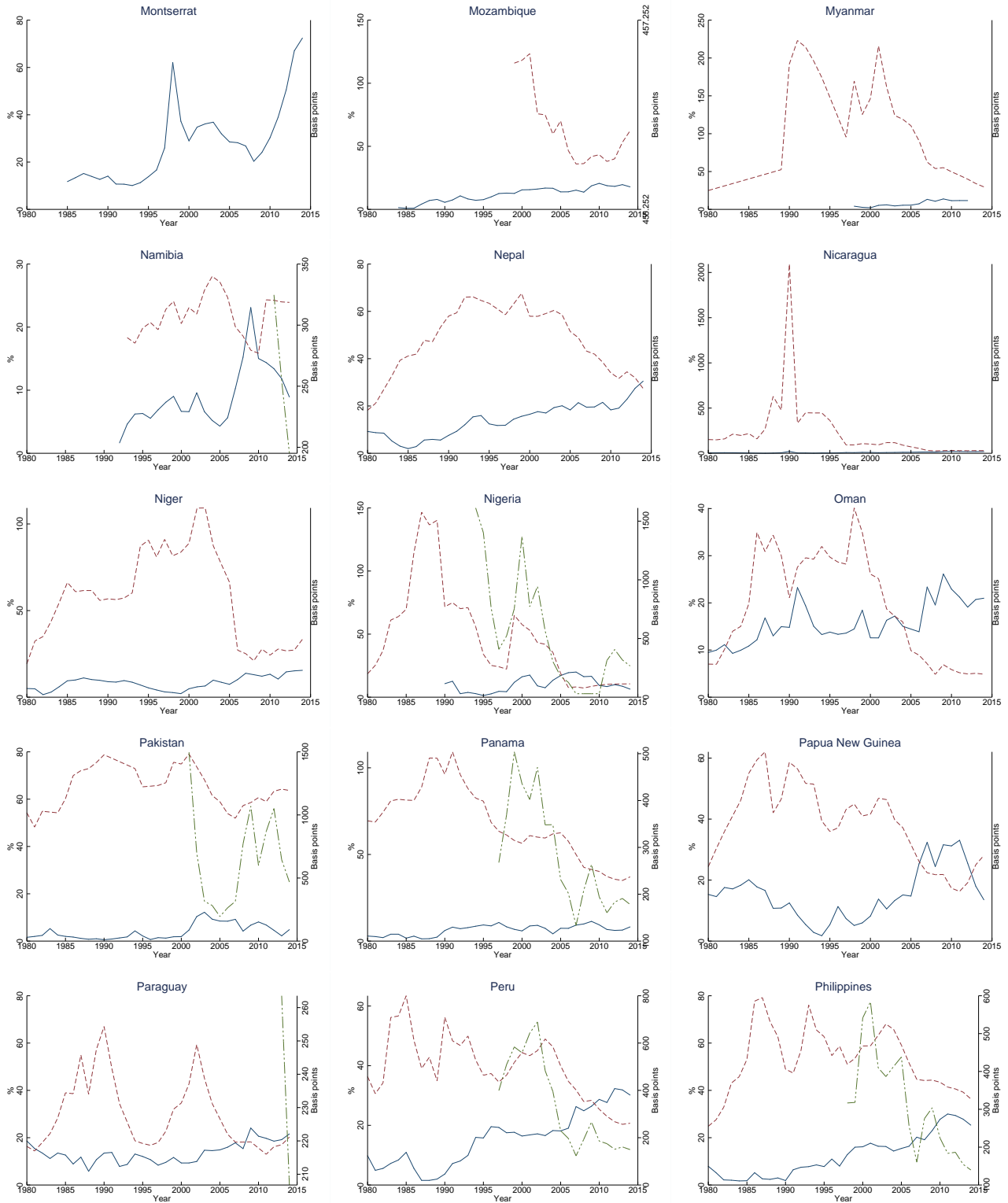


Figure 7: Sovereign spreads (dashed and dotted line; RHS), and international reserves (solid line) and public debt (dashed line) to GDP ratios.

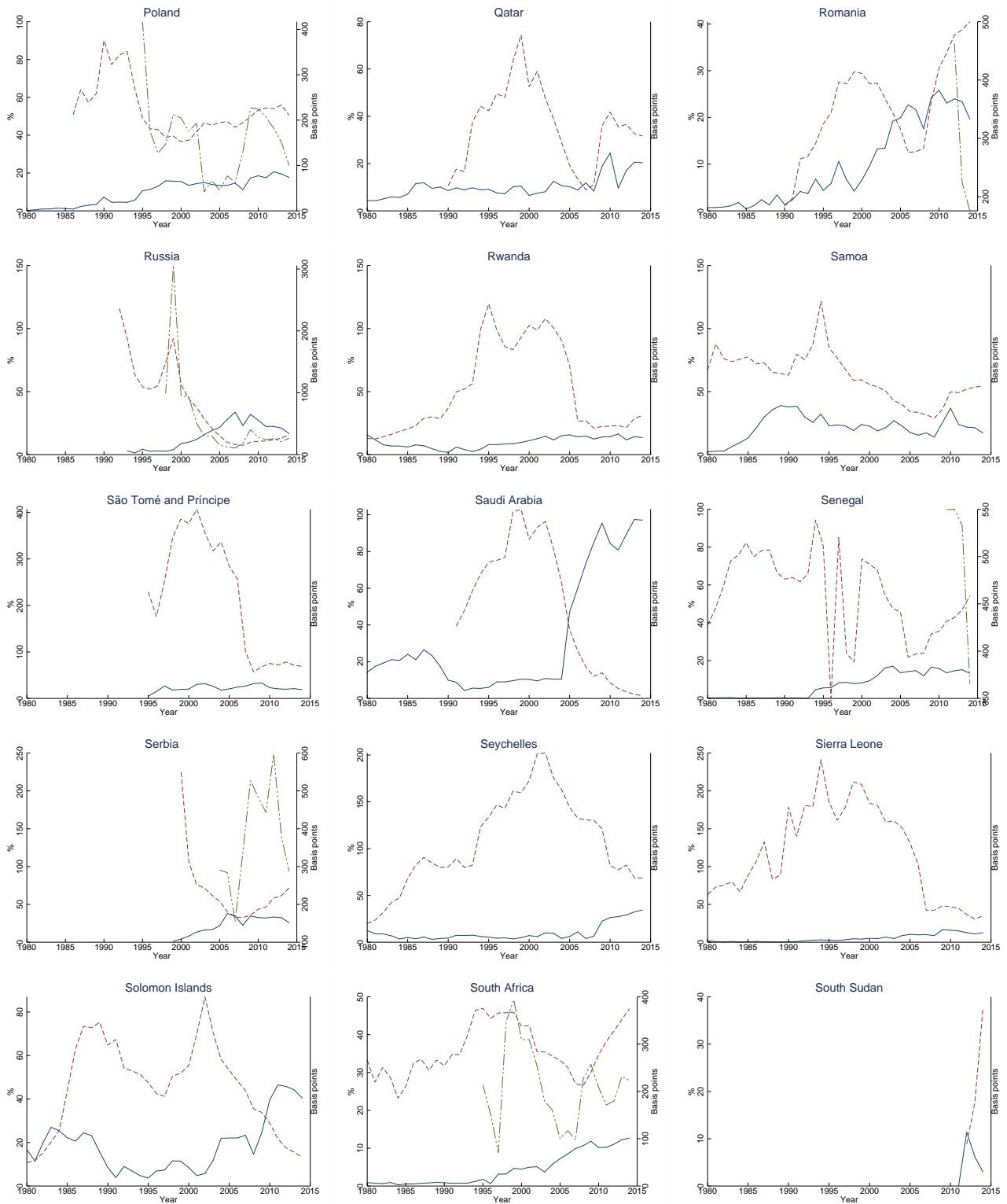


Figure 8: Sovereign spreads (dashed and dotted line; RHS), and international reserves (solid line) and public debt (dashed line) to GDP ratios.

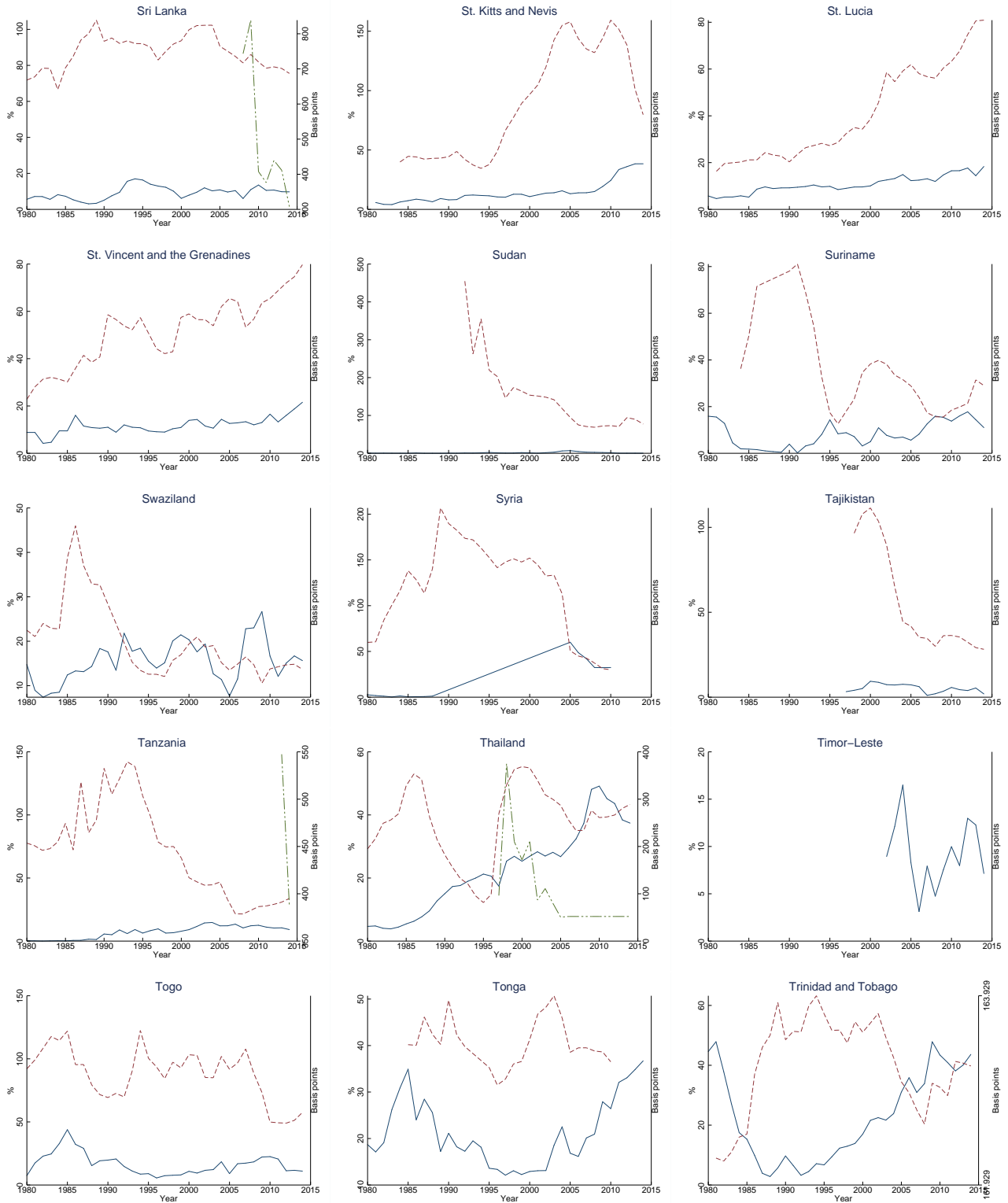


Figure 9: Sovereign spreads (dashed and dotted line; RHS), and international reserves (solid line) and public debt (dashed line) to GDP ratios.

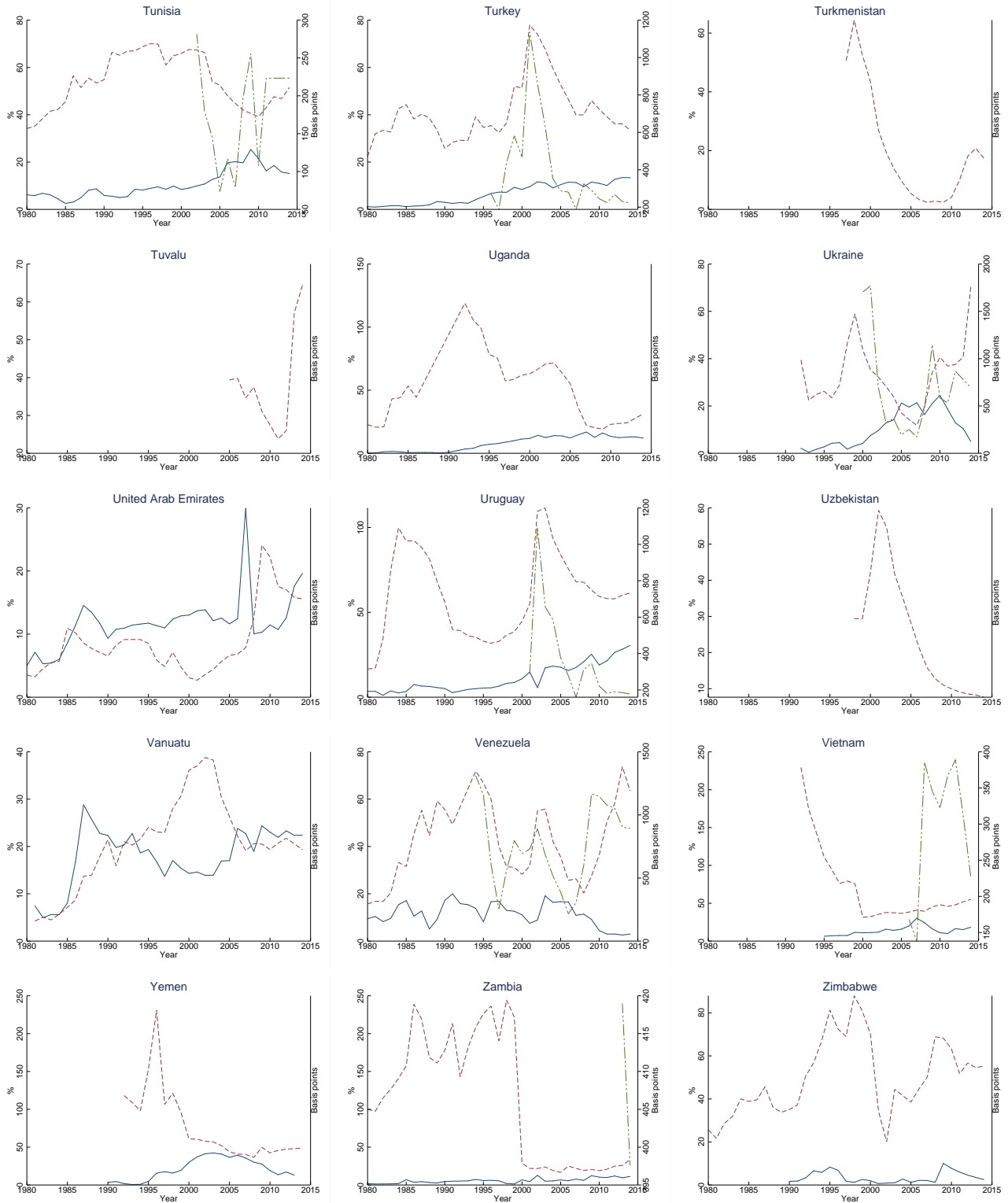


Figure 10: Sovereign spreads (dashed and dotted line; RHS), and international reserves (solid line) and public debt (dashed line) to GDP ratios.